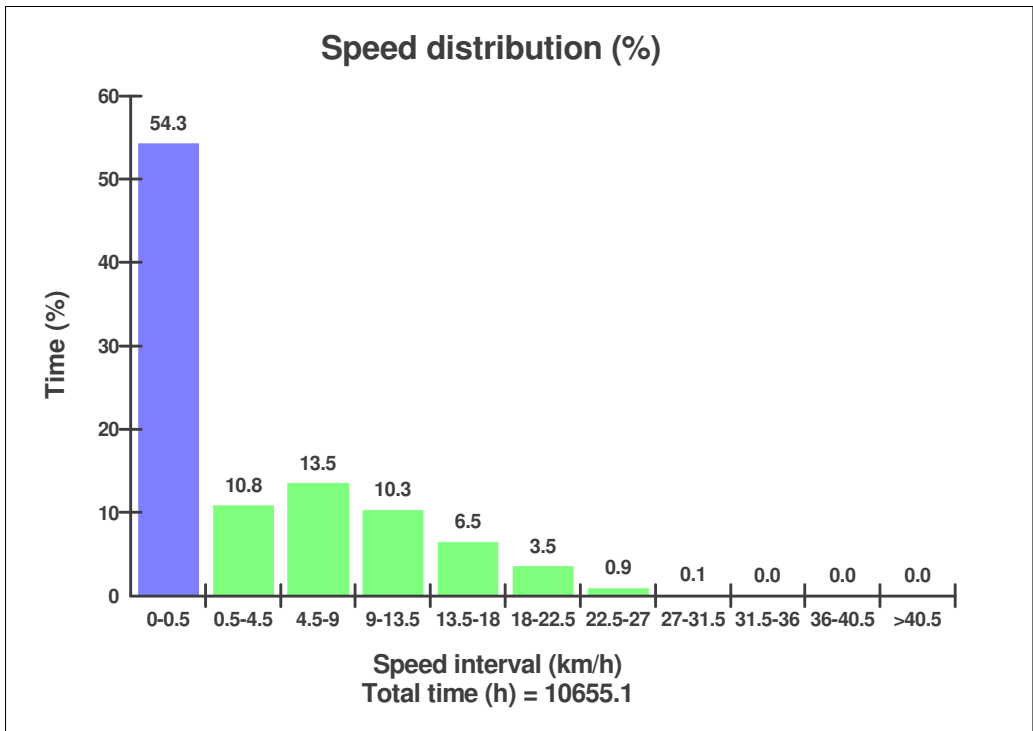
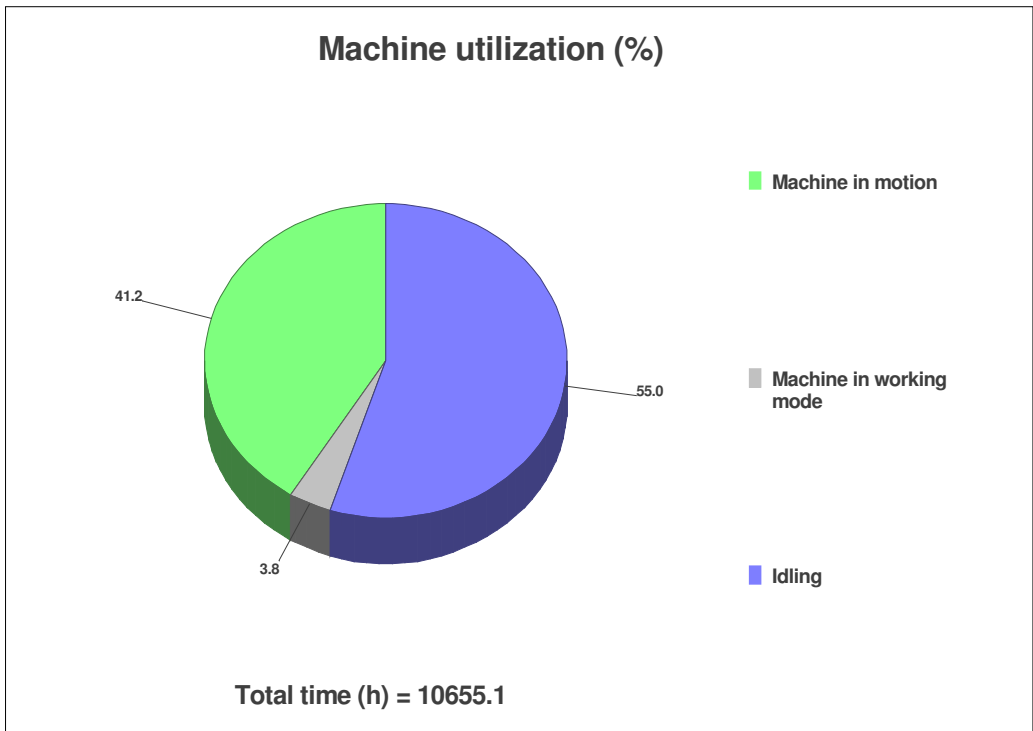


Sales model:	L60E	Serial no:	3105
Customer name	used	Date:	30/06/2010
Country:	United Kingdom	Operating hours:	10654.0
Reading date:	08/06/2010	Workorder:	3080916
Primary application:	Light material handling		

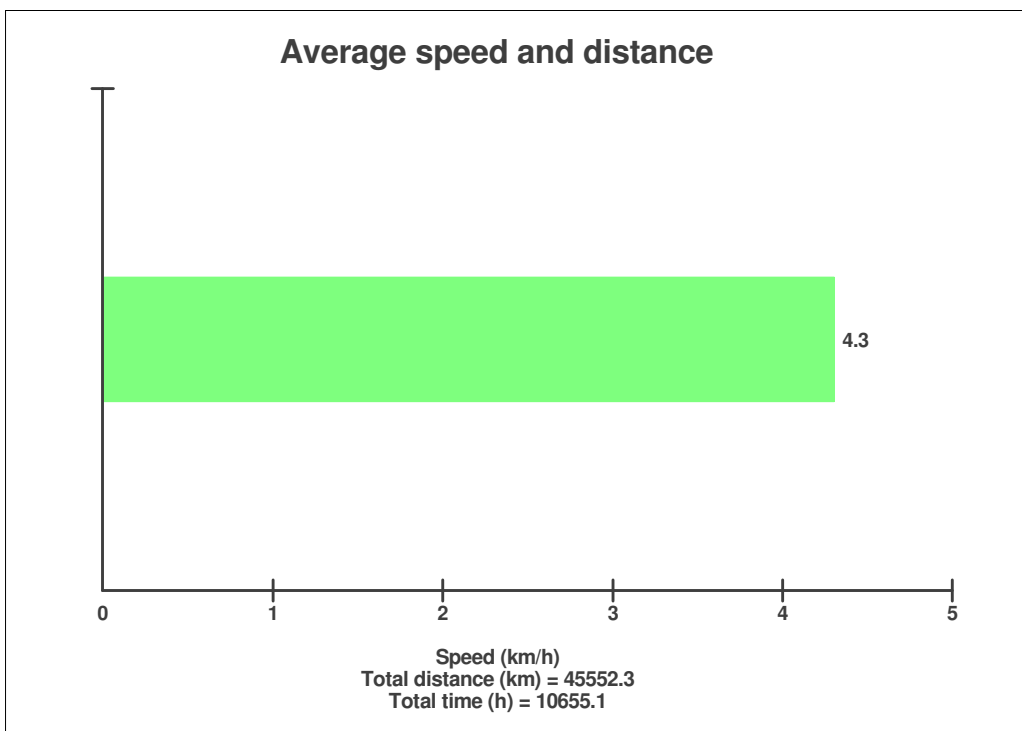
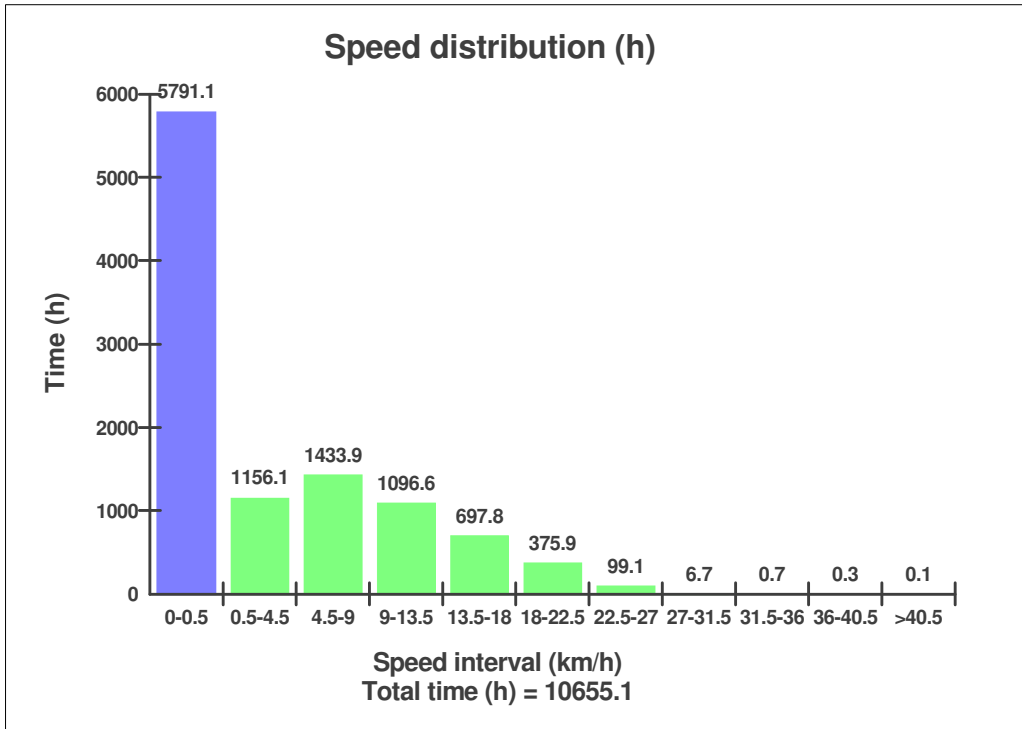
Note:

Main equipment:	Type:	Equipment
	Tyre size/class	20,5-25 L3
	Attachment Interface	Pin-on
	Main Attachment	Sold without attachment
	Extra Counterweight	None
	Ballast	None
	Chains	Not mounted
	Boom Suspension System	Not mounted
	Differential lock, text till "gömd" hotspot	Not mounted

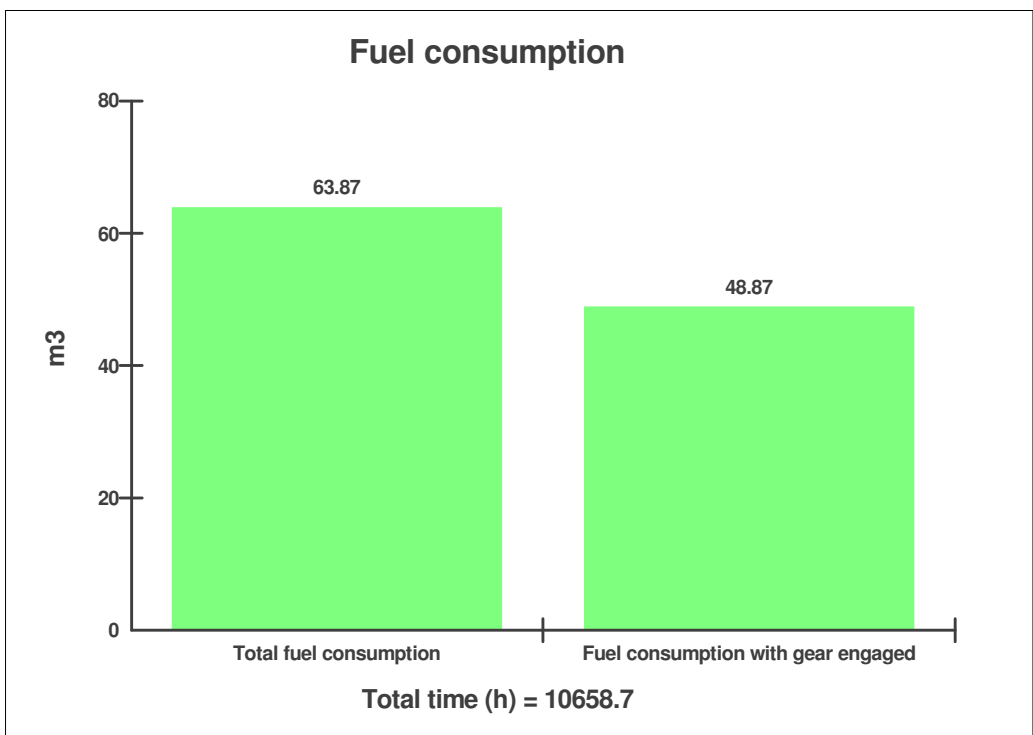
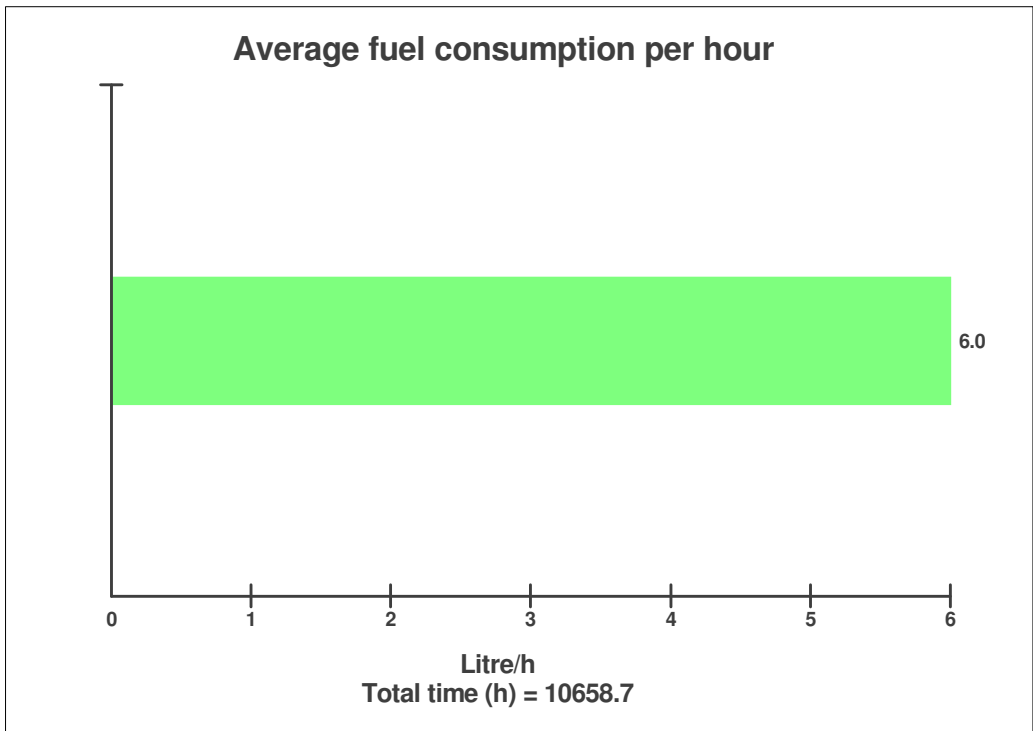
Sales model: L60E **Serial no:** 3105 **Operating hours:** 10654.0
Customer name: used **Reading date:** 08/06/2010
Workorder: 3080916



Sales model: L60E **Serial no:** 3105 **Operating hours:** 10654.0
Customer name: used **Reading date:** 08/06/2010
Workorder: 3080916



Sales model: L60E **Serial no:** 3105 **Operating hours:** 10654.0
Customer name used **Reading date:** 08/06/2010
Workorder: 3080916



Sales model: L60E **Serial no:** 3105 **Operating hours:** 10654.0
Customer name used **Reading date:** 08/06/2010
Workorder: 3080916

Engine ECU information
Engine ECU information

ECU MID	128
Hardware Part No	20577135
Hardware Issue	4
Software Part No	20895333
Software Issue	1
Serial no	74799
Dataset 1 Part No	12331158
Dataset 1 Issue	1
Dataset 2 Part No	12335099
Dataset 2 Issue	1

Instrument ECU information
Instrument ECU information

ECU MID	140
----------------	------------

Sales model: L60E **Serial no:** 3105 **Operating hours:** 10654.0
Customer name used **Reading date:** 08/06/2010
Workorder: 3080916

Vehicle ECU information

Vehicle ECU information

ECU MID **187**

Hardware Part No **11185050**

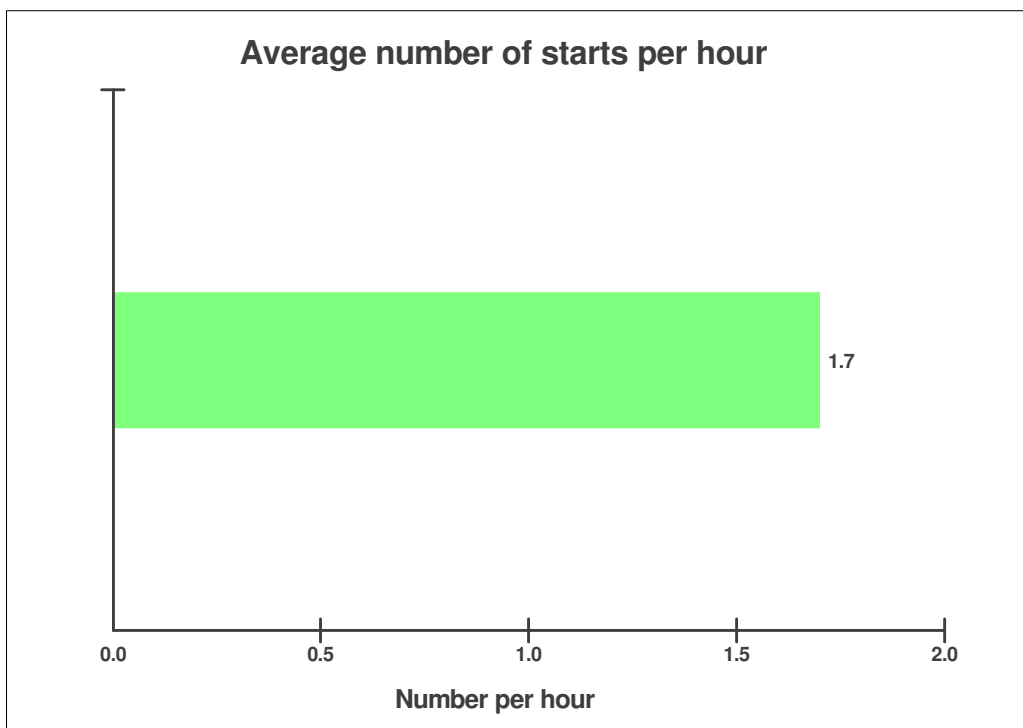
Hardware Issue **1**

Software Part No **11443172**

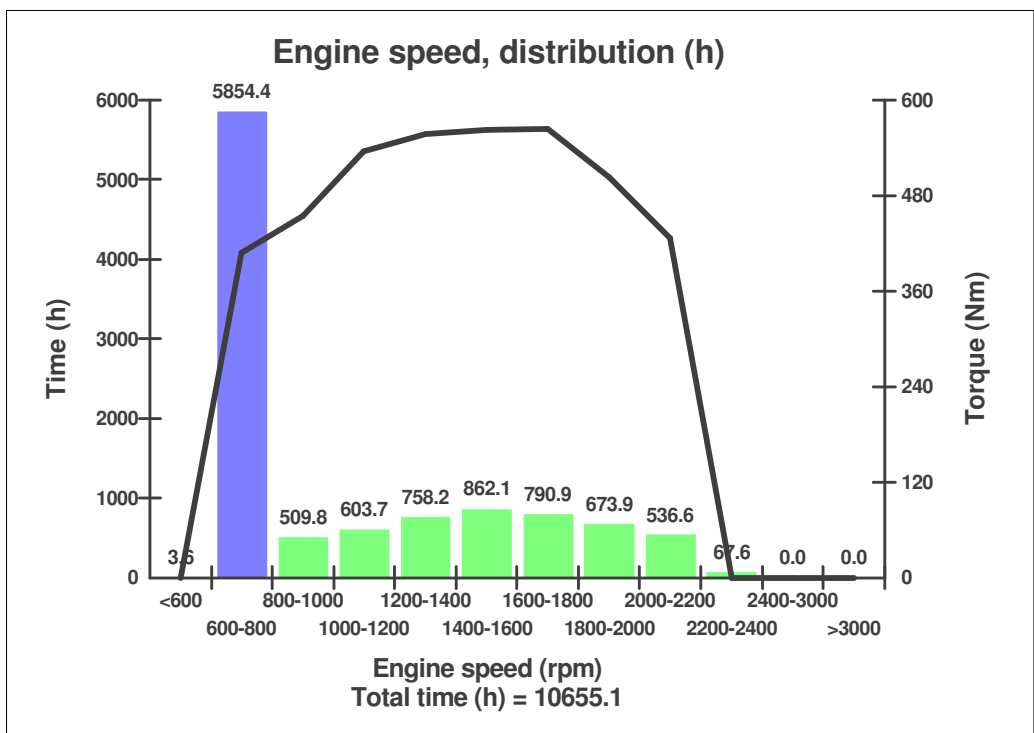
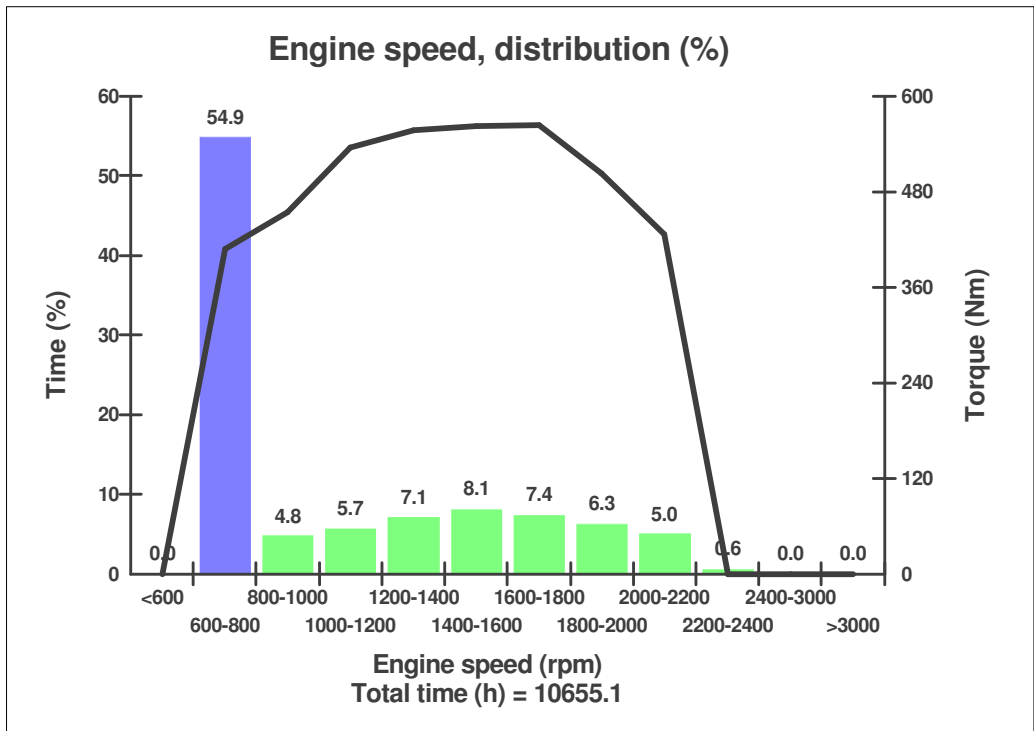
Serial no **6130079**

Dataset 1 Part No **11443056**

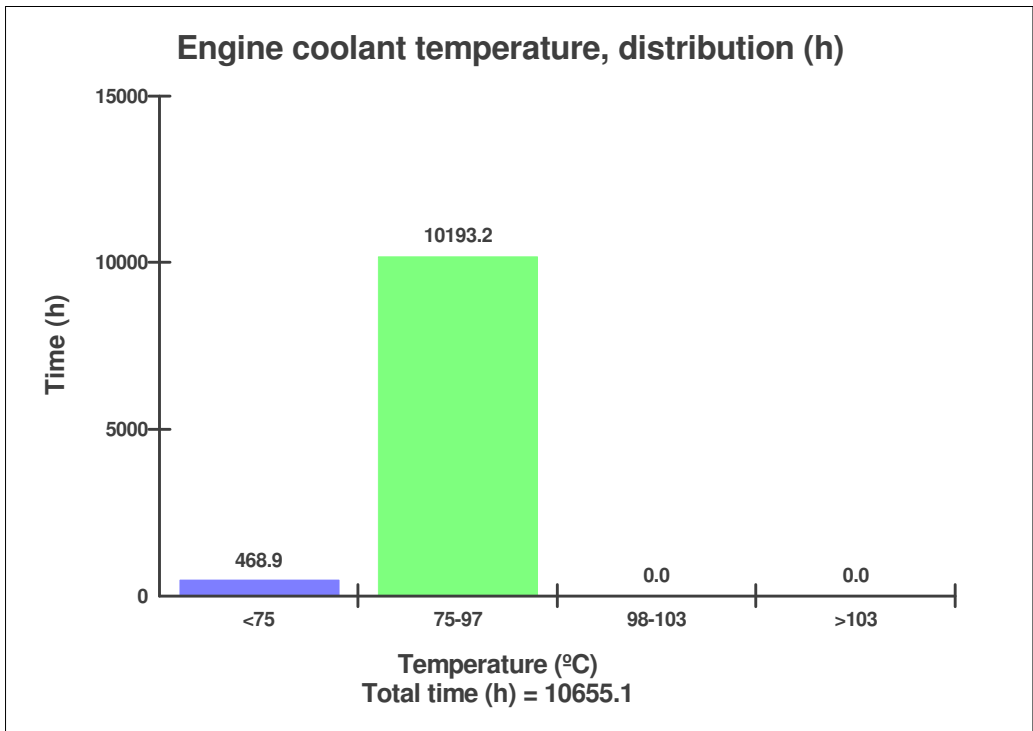
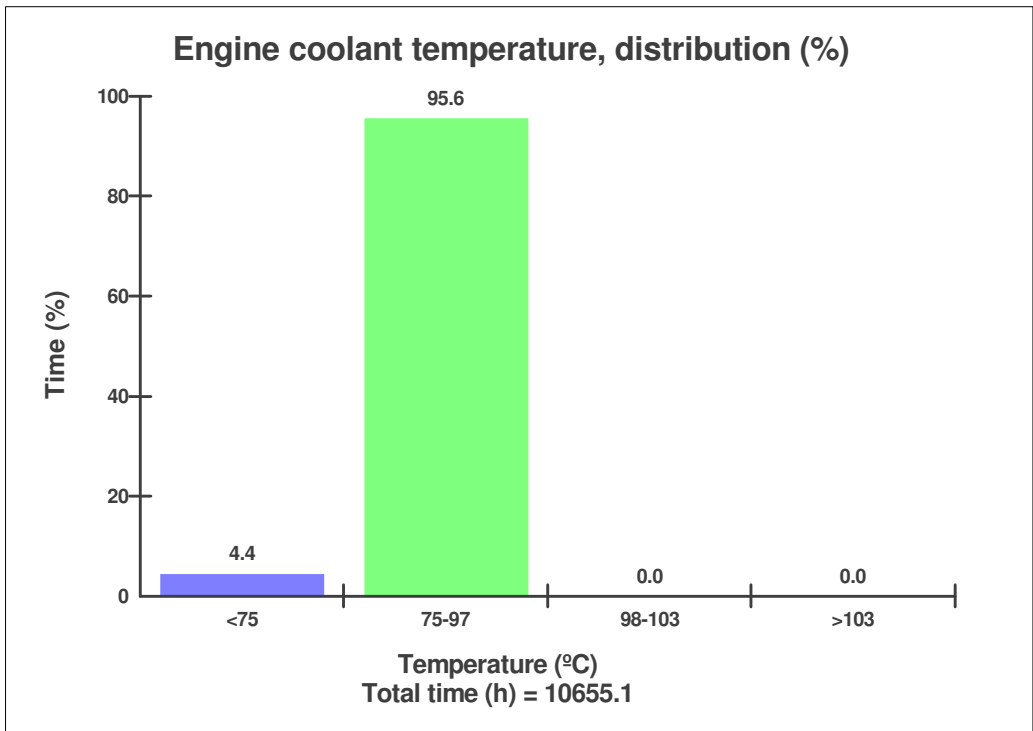
Dataset 2 Part No **11443163**



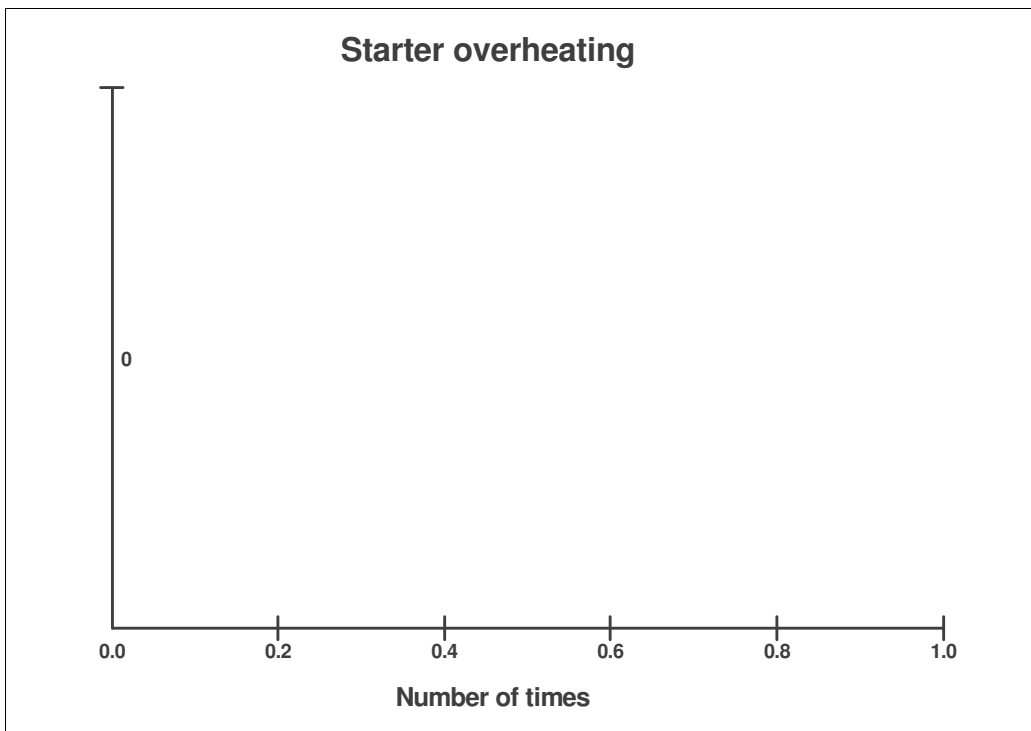
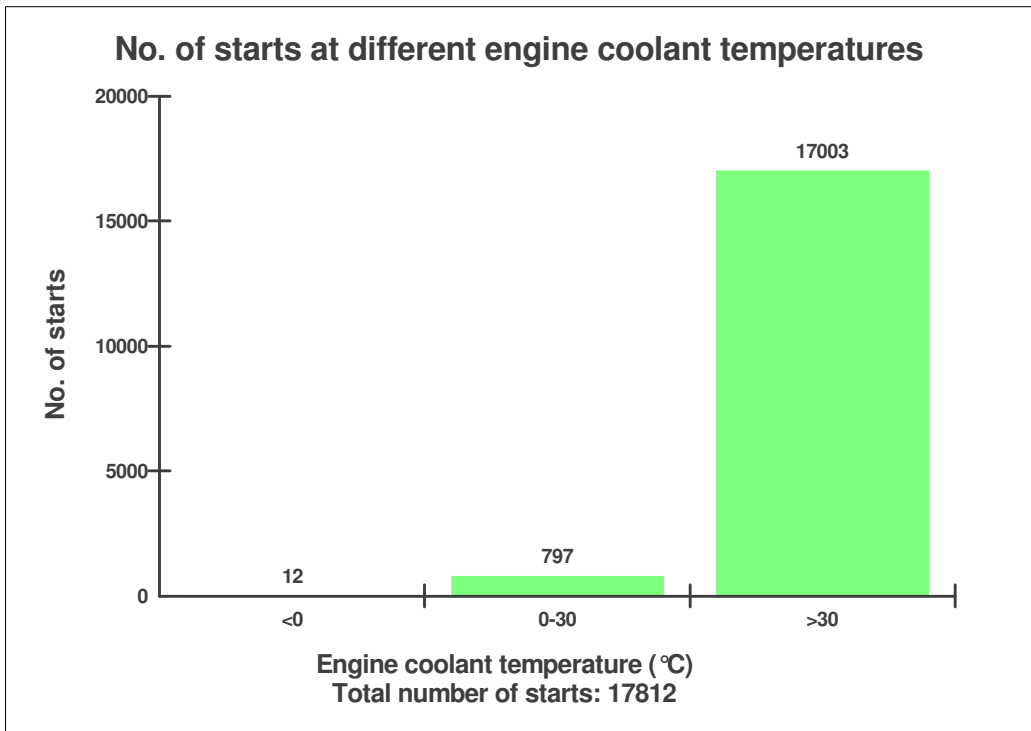
Sales model: L60E **Serial no:** 3105 **Operating hours:** 10654.0
Customer name: used **Reading date:** 08/06/2010
Workorder: 3080916



Sales model: L60E **Serial no:** 3105 **Operating hours:** 10654.0
Customer name: used **Reading date:** 08/06/2010
Workorder: 3080916



Sales model: L60E **Serial no:** 3105 **Operating hours:** 10654.0
Customer name: used **Reading date:** 08/06/2010
Workorder: 3080916



Sales model: L60E **Serial no:** 3105 **Operating hours:** 10654.0
Customer name used **Reading date:** 08/06/2010
Workorder: 3080916

Alarm engine air filter
Alarm engine air filter
Total number of events: 0

	Op hours	Year	Month	Day	Hour	Minute
J	0	2000	0	0	0	0
I	0	2000	0	0	0	0
H	0	2000	0	0	0	0
G	0	2000	0	0	0	0
F	0	2000	0	0	0	0
E	0	2000	0	0	0	0
D	0	2000	0	0	0	0
C	0	2000	0	0	0	0
A	0	2000	0	0	0	0
B	0	2000	0	0	0	0

High engine coolant temperature
High engine coolant temperature
Total number of events: 0

Op hours	Year	Month	Day	Hour	Minute
----------	------	-------	-----	------	--------

Sales model: L60E **Serial no:** 3105 **Operating hours:** 10654.0
Customer name used **Reading date:** 08/06/2010
Workorder: 3080916

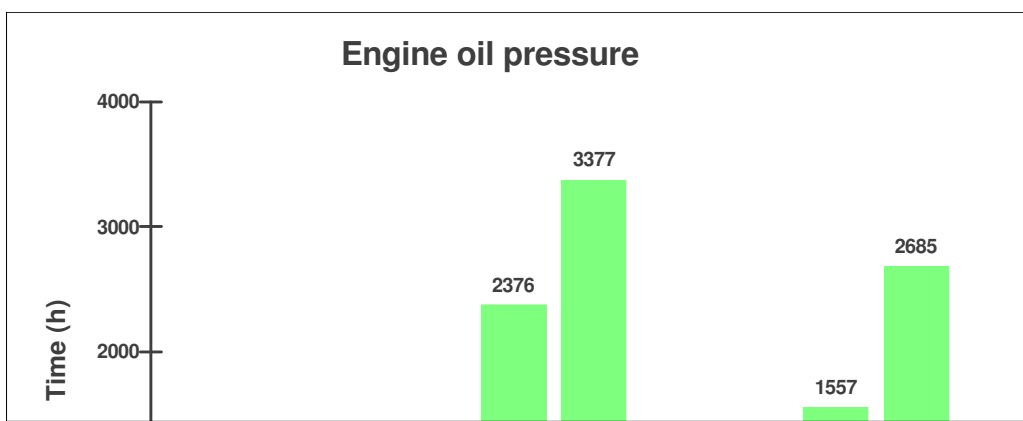
High engine coolant temperature
High engine coolant temperature
Total number of events: 0

	Op hours	Year	Month	Day	Hour	Minute
J	0	2000	0	0	0	0
I	0	2000	0	0	0	0
H	0	2000	0	0	0	0
G	0	2000	0	0	0	0
F	0	2000	0	0	0	0
E	0	2000	0	0	0	0
D	0	2000	0	0	0	0
C	0	2000	0	0	0	0
A	0	2000	0	0	0	0
B	0	2000	0	0	0	0

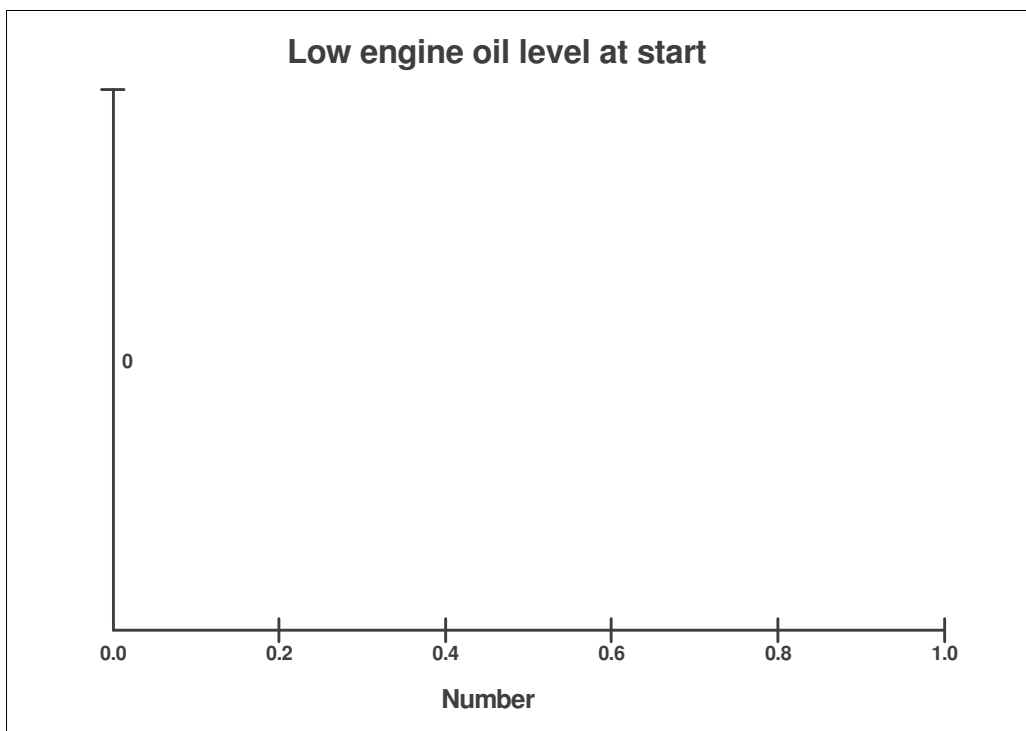
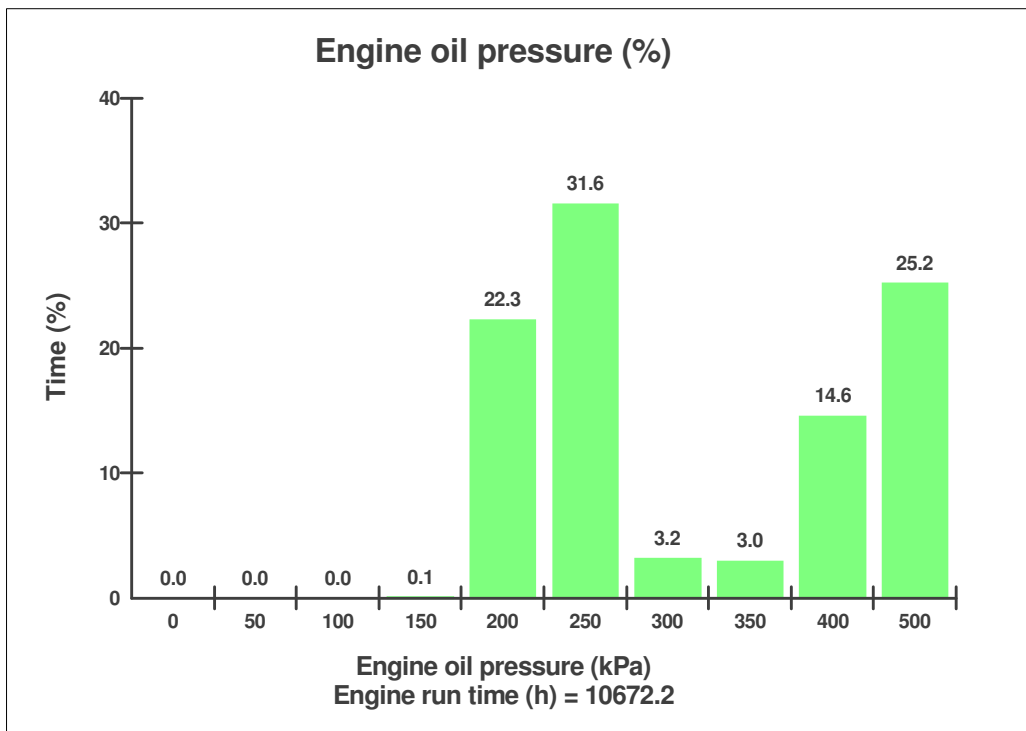
Sales model: L60E **Serial no:** 3105 **Operating hours:** 10654.0
Customer name used **Reading date:** 08/06/2010
Workorder: 3080916

Low engine oil pressure
Low engine oil pressure
Total number of events: 0

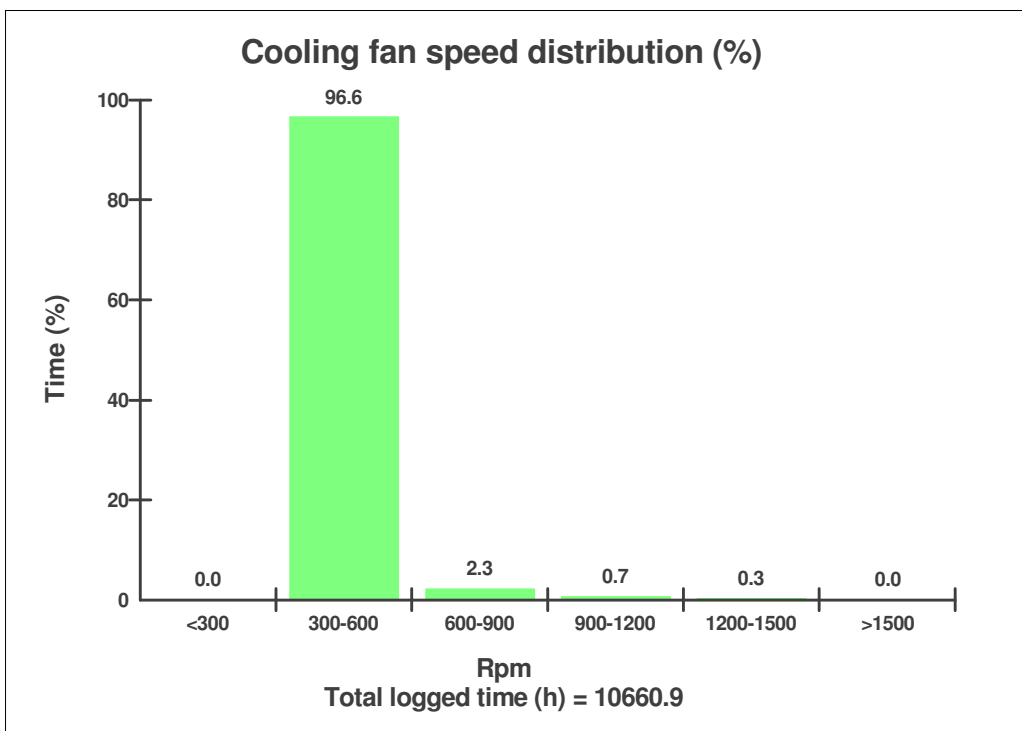
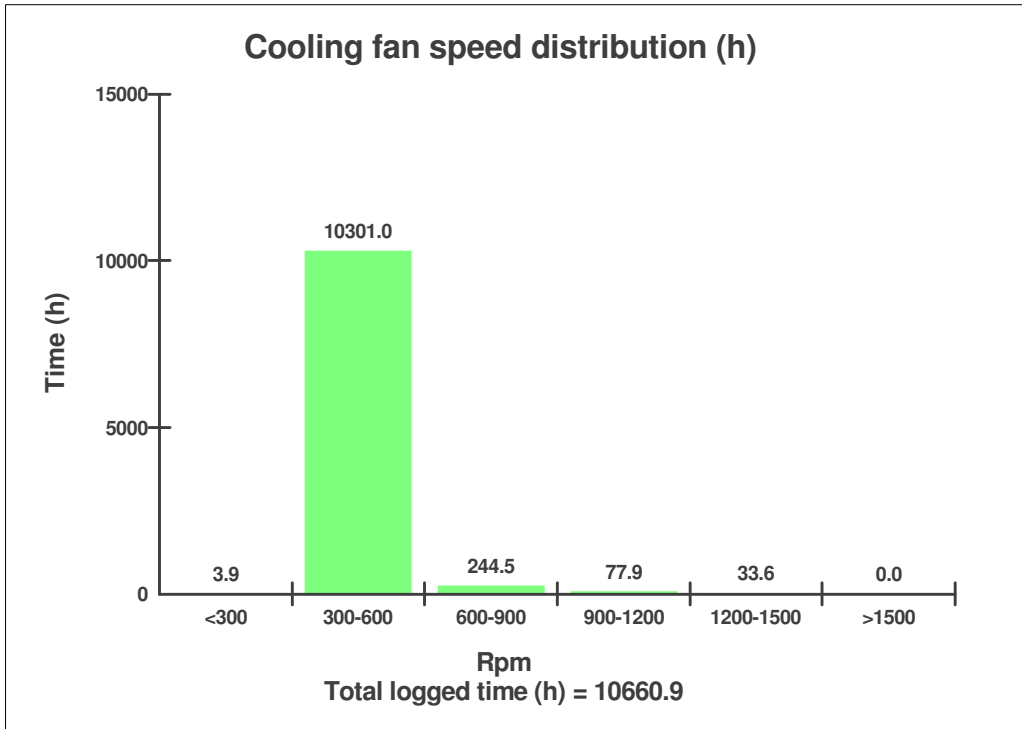
	Op hours	Year	Month	Day	Hour	Minute
J	0	2000	0	0	0	0
I	0	2000	0	0	0	0
H	0	2000	0	0	0	0
G	0	2000	0	0	0	0
F	0	2000	0	0	0	0
E	0	2000	0	0	0	0
D	0	2000	0	0	0	0
C	0	2000	0	0	0	0
A	0	2000	0	0	0	0
B	0	2000	0	0	0	0



Sales model: L60E **Serial no:** 3105 **Operating hours:** 10654.0
Customer name: used **Reading date:** 08/06/2010
Workorder: 3080916



Sales model: L60E **Serial no:** 3105 **Operating hours:** 10654.0
Customer name: used **Reading date:** 08/06/2010
Workorder: 3080916



Sales model: L60E **Serial no:** 3105 **Operating hours:** 10654.0
Customer name used **Reading date:** 08/06/2010
Workorder: 3080916

High voltage
High voltage
Total number of events: 0

	Op hours	Year	Month	Day	Hour	Minute
J	0	2000	0	0	0	0
I	0	2000	0	0	0	0
H	0	2000	0	0	0	0
G	0	2000	0	0	0	0
F	0	2000	0	0	0	0
E	0	2000	0	0	0	0
D	0	2000	0	0	0	0
C	0	2000	0	0	0	0
A	0	2000	0	0	0	0
B	0	2000	0	0	0	0

Low voltage
Low voltage
Total number of events: 12

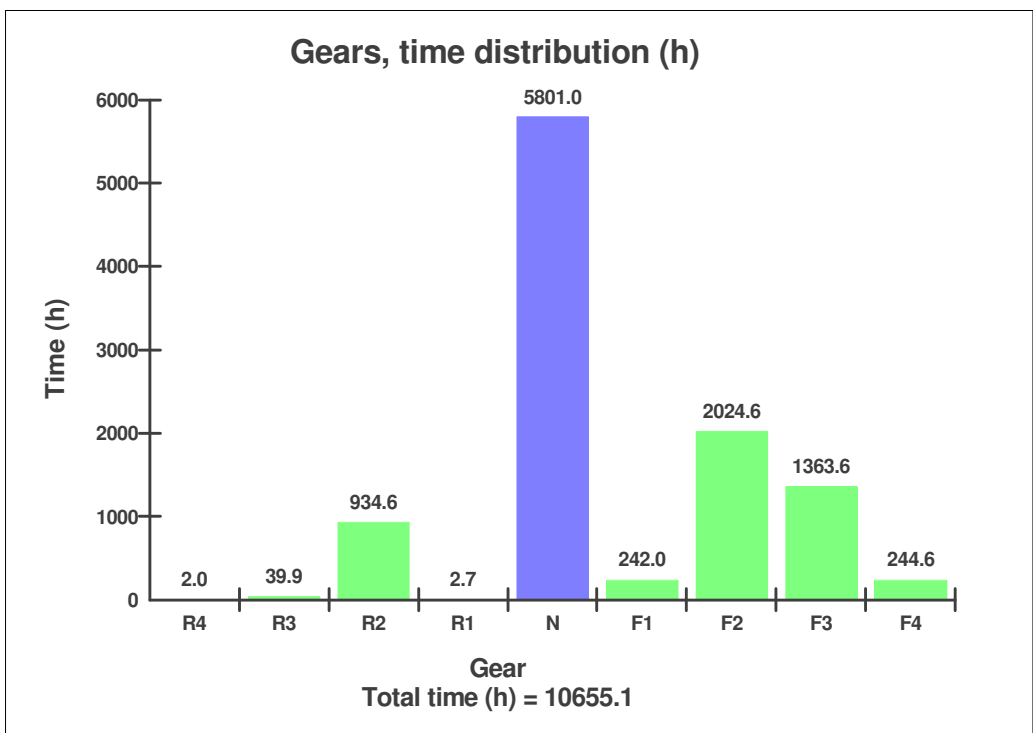
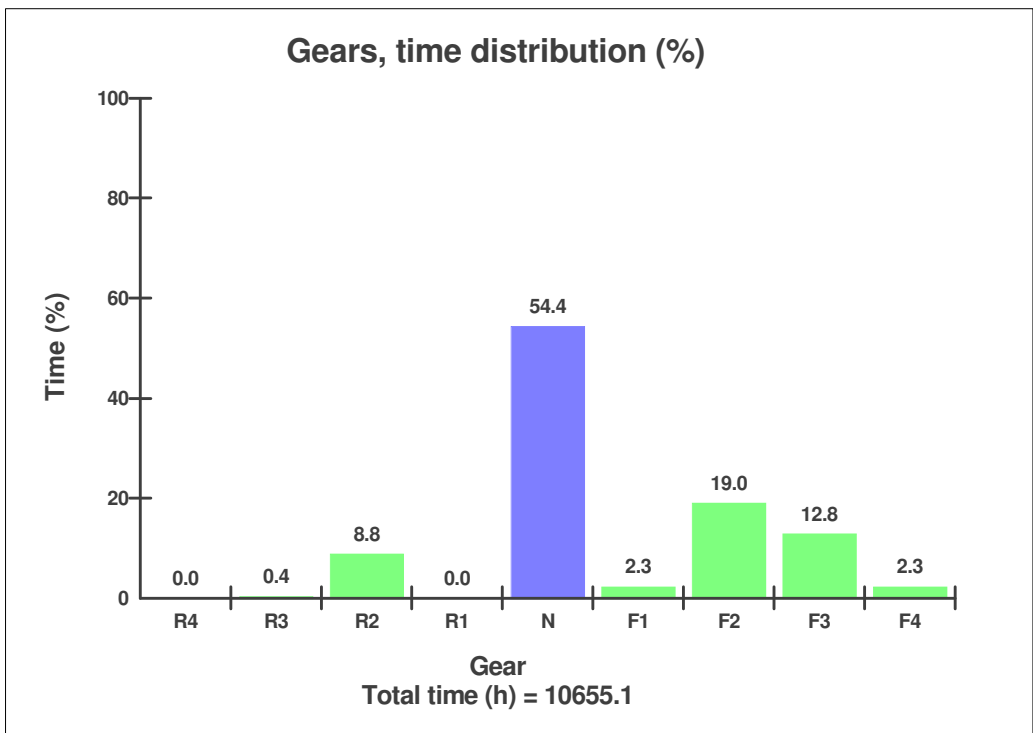
Op hours Year Month Day Hour Minute

Sales model: L60E **Serial no:** 3105 **Operating hours:** 10654.0
Customer name used **Reading date:** 08/06/2010
Workorder: 3080916

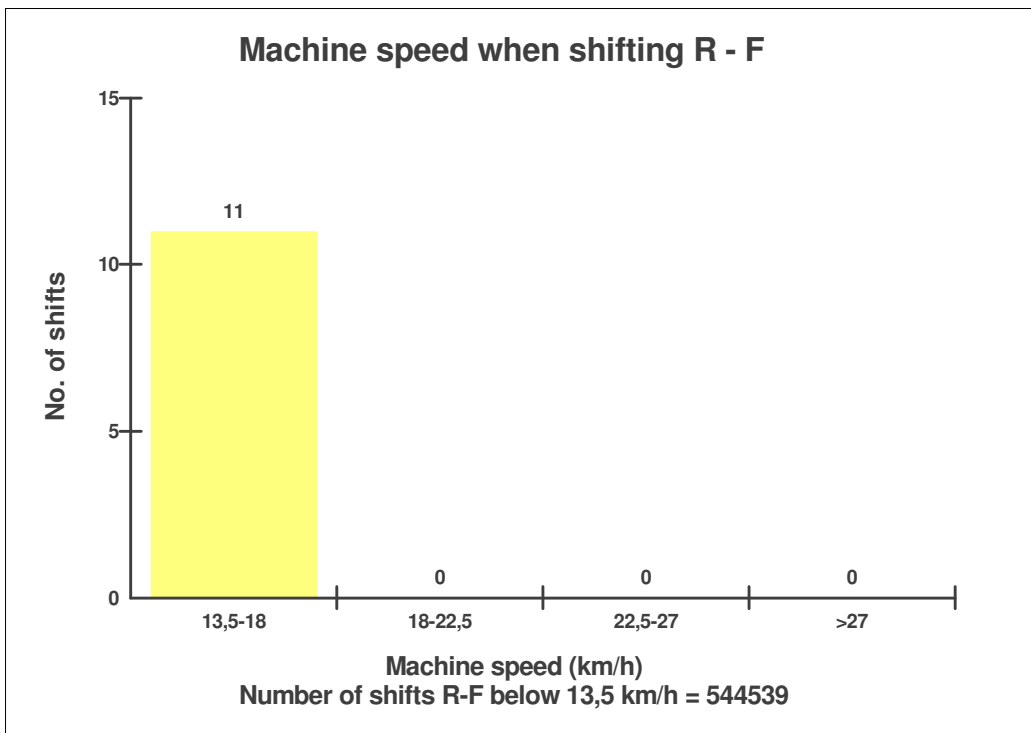
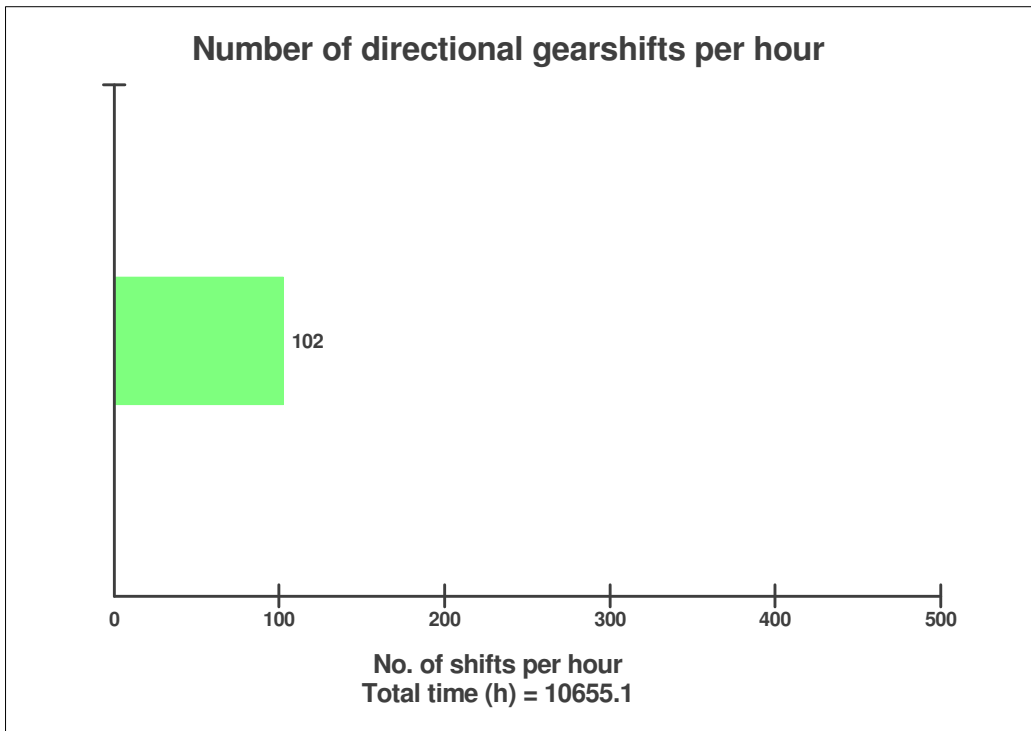
Low voltage
Low voltage
Total number of events: 12

	Op hours	Year	Month	Day	Hour	Minute
C	116	2007	7	18	6	3
D	8806	2009	5	1	12	16
E	8884	2009	6	4	2	30
F	8985	2009	6	30	13	29
G	9096	2009	7	8	15	49
H	9934	2009	9	9	9	35
I	10146	2009	11	15	10	22
J	10159	2009	11	16	6	29
A	10211	2009	12	14	4	47
B	10500	2010	3	17	16	7

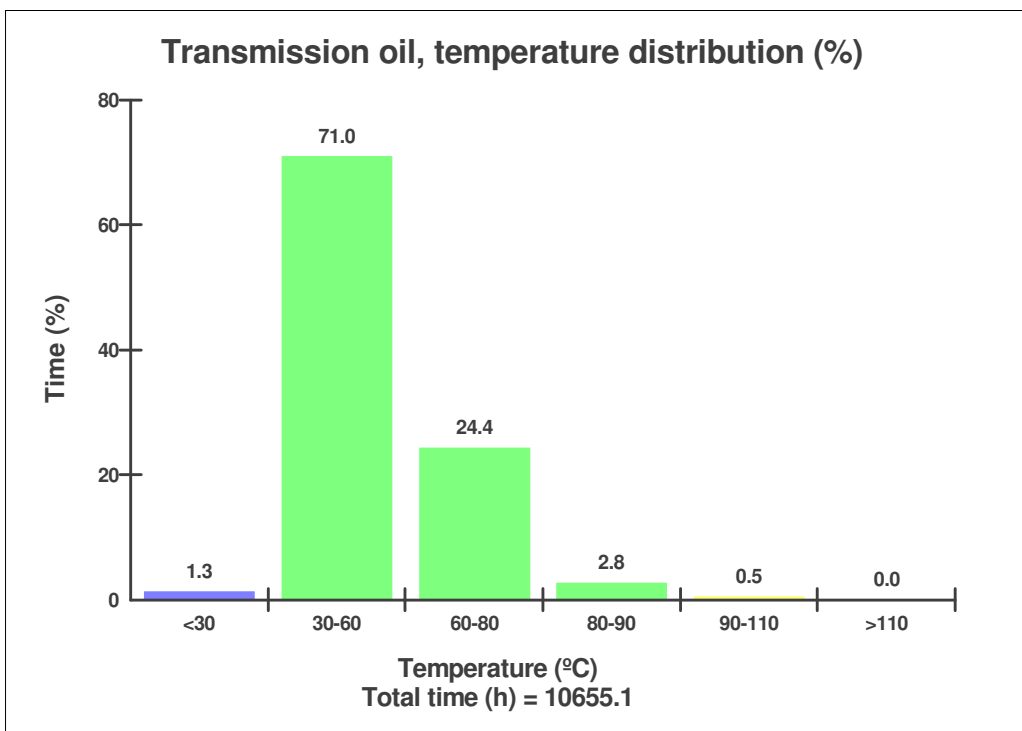
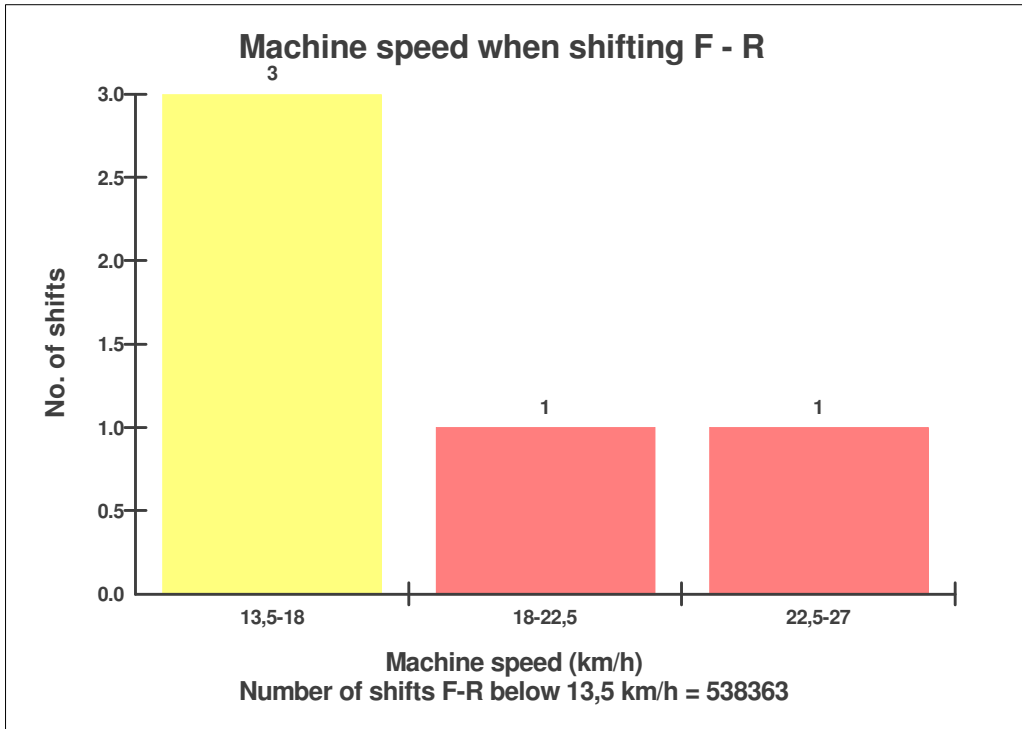
Sales model: L60E **Serial no:** 3105 **Operating hours:** 10654.0
Customer name: used **Reading date:** 08/06/2010
Workorder: 3080916



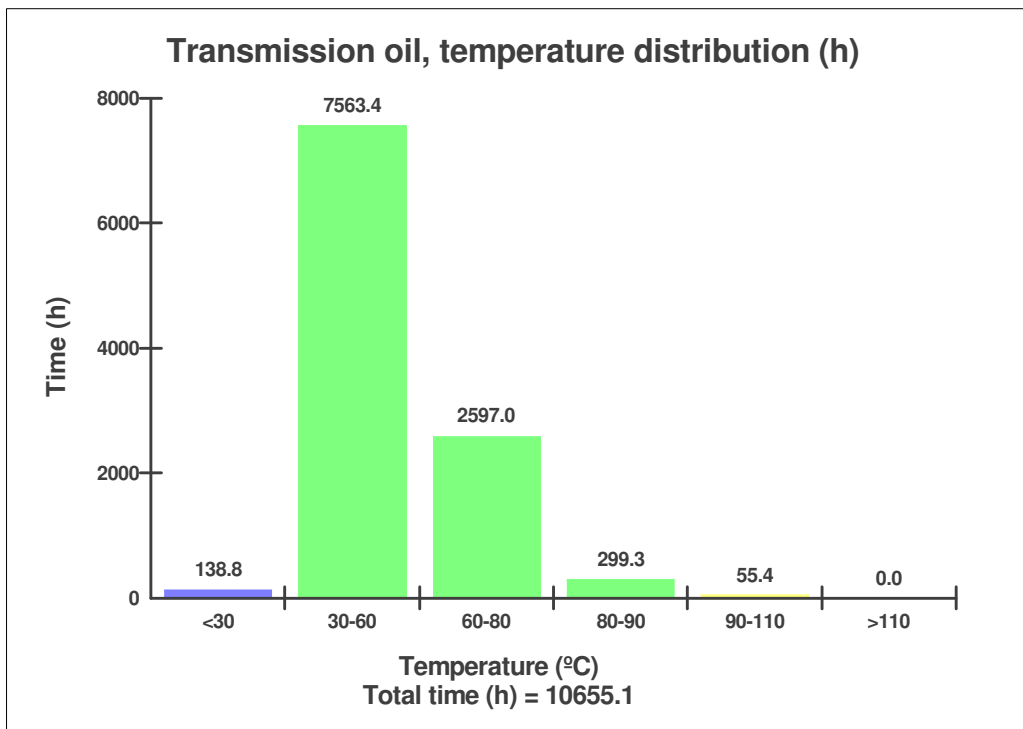
Sales model: L60E **Serial no:** 3105 **Operating hours:** 10654.0
Customer name used **Reading date:** 08/06/2010
Workorder: 3080916



Sales model: L60E **Serial no:** 3105 **Operating hours:** 10654.0
Customer name: used **Reading date:** 08/06/2010
Workorder: 3080916



Sales model: L60E **Serial no:** 3105 **Operating hours:** 10654.0
Customer name used **Reading date:** 08/06/2010
Workorder: 3080916



Low transmission oil pressure
Low transmission oil pressure
Total number of events: 30

	Op hours	Year	Month	Day	Hour	Minute
A	63	2008	10	25	1	2
B	72	2008	11	8	12	31
C	8767	2009	3	30	15	26
D	8816	2009	5	11	12	43
E	9950	2009	9	10	15	49
F	10074	2009	10	23	9	12

Sales model: L60E **Serial no:** 3105 **Operating hours:** 10654.0
Customer name used **Reading date:** 08/06/2010
Workorder: 3080916

Low transmission oil pressure

Low transmission oil pressure

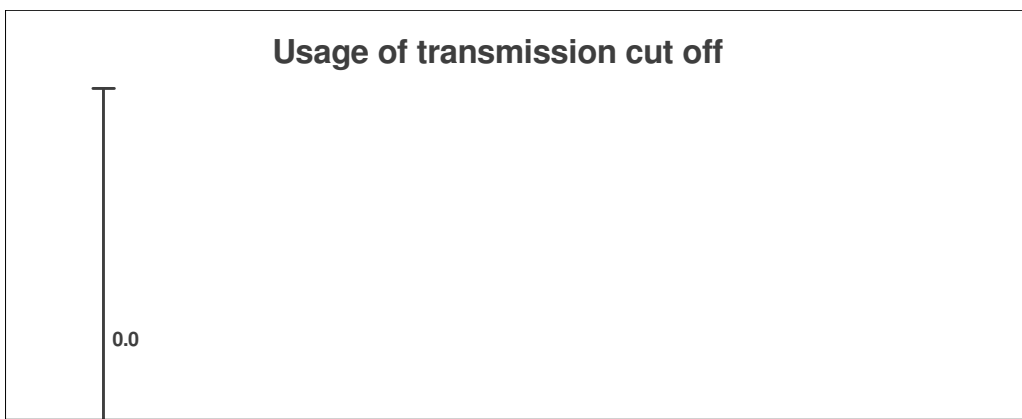
Total number of events: 30

	Op hours	Year	Month	Day	Hour	Minute
G	10159	2009	11	16	6	29
H	10499	2010	3	17	15	22
I	10499	2010	3	17	15	22
J	10500	2010	3	17	16	7

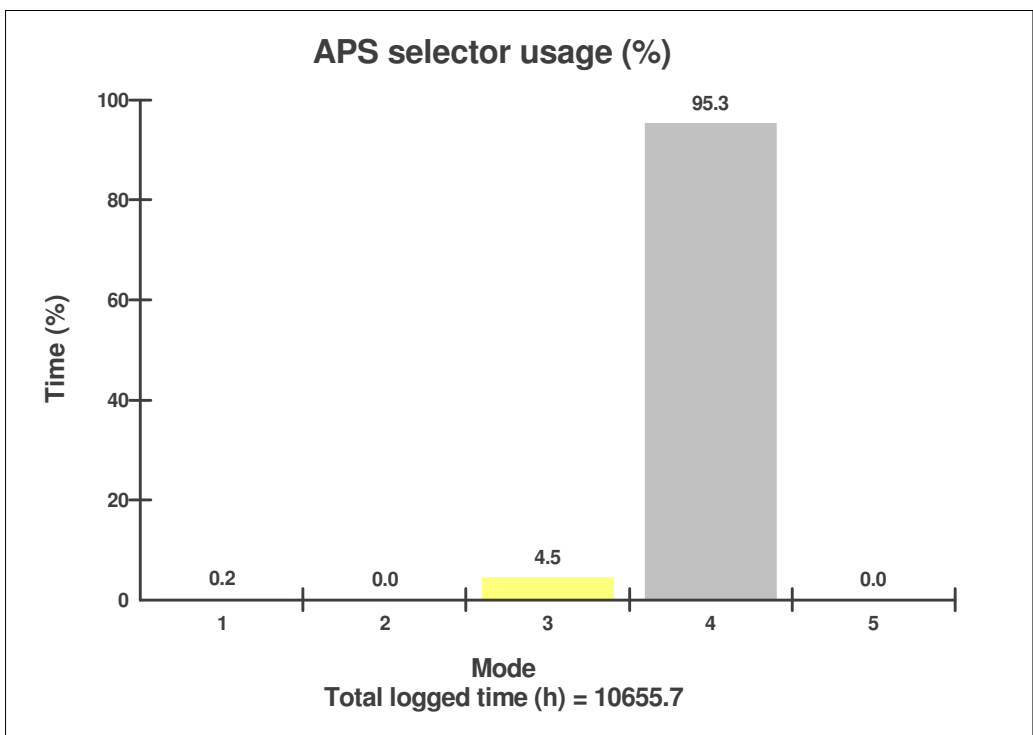
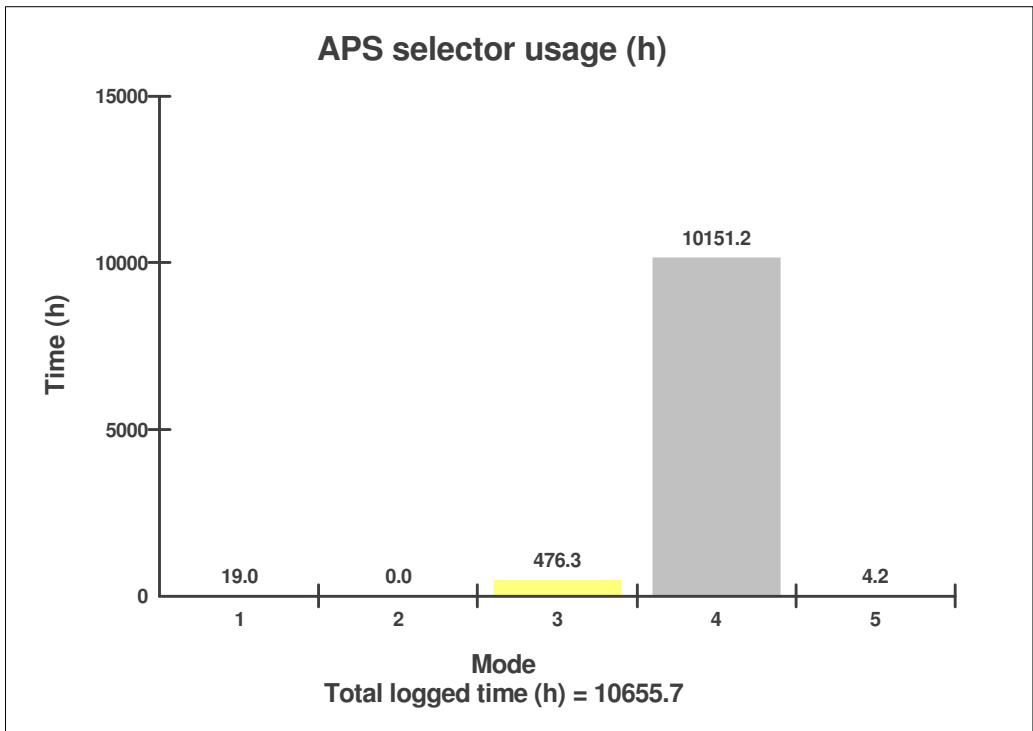
Sales model: L60E **Serial no:** 3105 **Operating hours:** 10654.0
Customer name used **Reading date:** 08/06/2010
Workorder: 3080916

High transmission oil temperature
High transmission oil temperature
Total number of events: 0

	Op hours	Year	Month	Day	Hour	Minute
J	0	2000	0	0	0	0
I	0	2000	0	0	0	0
H	0	2000	0	0	0	0
G	0	2000	0	0	0	0
F	0	2000	0	0	0	0
E	0	2000	0	0	0	0
D	0	2000	0	0	0	0
C	0	2000	0	0	0	0
A	0	2000	0	0	0	0
B	0	2000	0	0	0	0



Sales model: L60E **Serial no:** 3105 **Operating hours:** 10654.0
Customer name used **Reading date:** 08/06/2010
Workorder: 3080916



Sales model: L60E

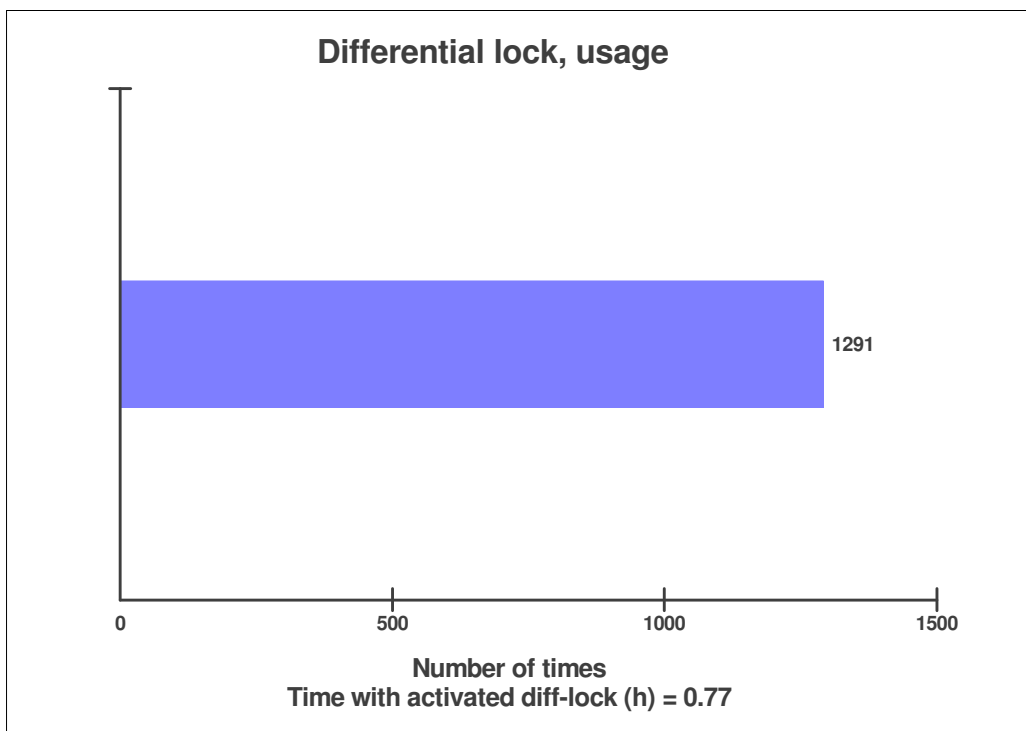
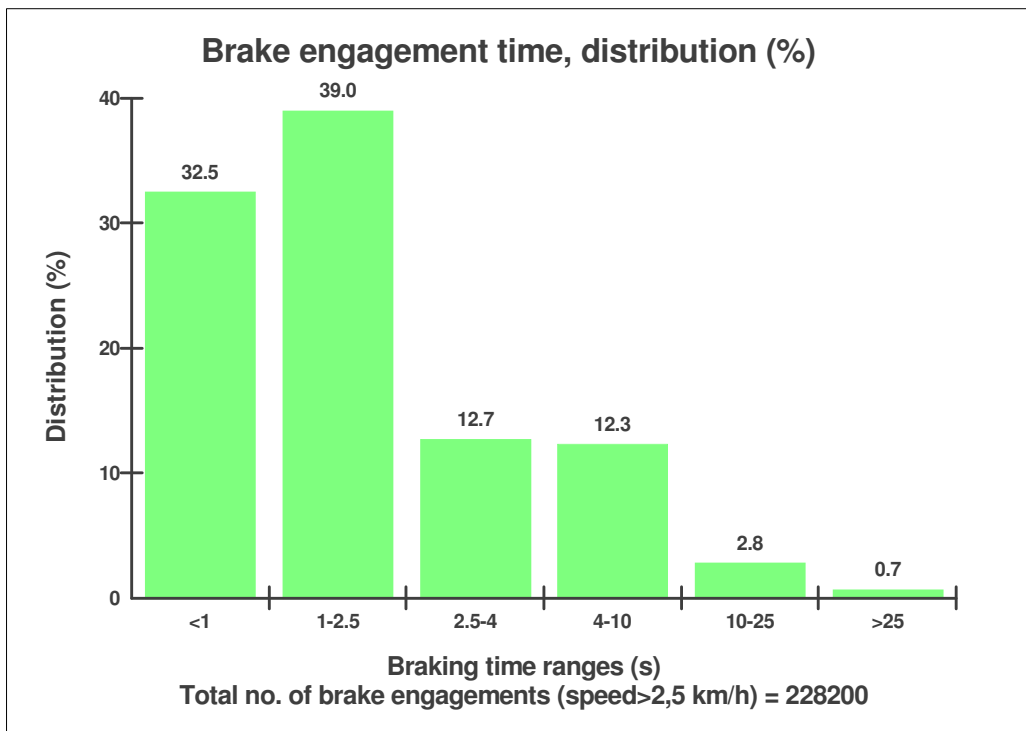
Serial no: 3105

Operating hours: 10654.0

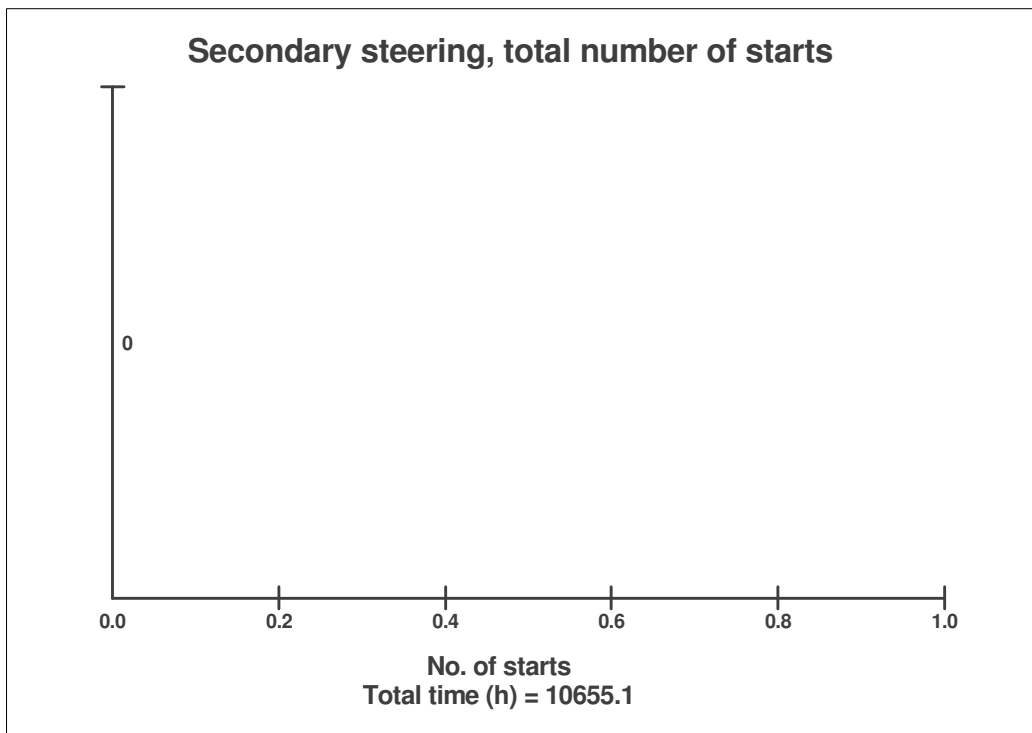
Customer name used

Reading date: 08/06/2010

Workorder: 3080916



Sales model: L60E **Serial no:** 3105 **Operating hours:** 10654.0
Customer name used **Reading date:** 08/06/2010
Workorder: 3080916



High hydraulic oil temperature
High hydraulic oil temperature
Total number of events: 0

	Op hours	Year	Month	Day	Hour	Minute
J	0	2000	0	0	0	0
I	0	2000	0	0	0	0
H	0	2000	0	0	0	0
G	0	2000	0	0	0	0
F	0	2000	0	0	0	0
E	0	2000	0	0	0	0

Sales model: L60E **Serial no:** 3105 **Operating hours:** 10654.0
Customer name used **Reading date:** 08/06/2010
Workorder: 3080916

High hydraulic oil temperature

High hydraulic oil temperature

Total number of events: 0

	Op hours	Year	Month	Day	Hour	Minute
D	0	2000	0	0	0	0
C	0	2000	0	0	0	0
A	0	2000	0	0	0	0
B	0	2000	0	0	0	0

Sales model: L60E **Serial no:** 3105 **Operating hours:** 10654.0
Customer name: used **Reading date:** 08/06/2010
Workorder: 3080916

