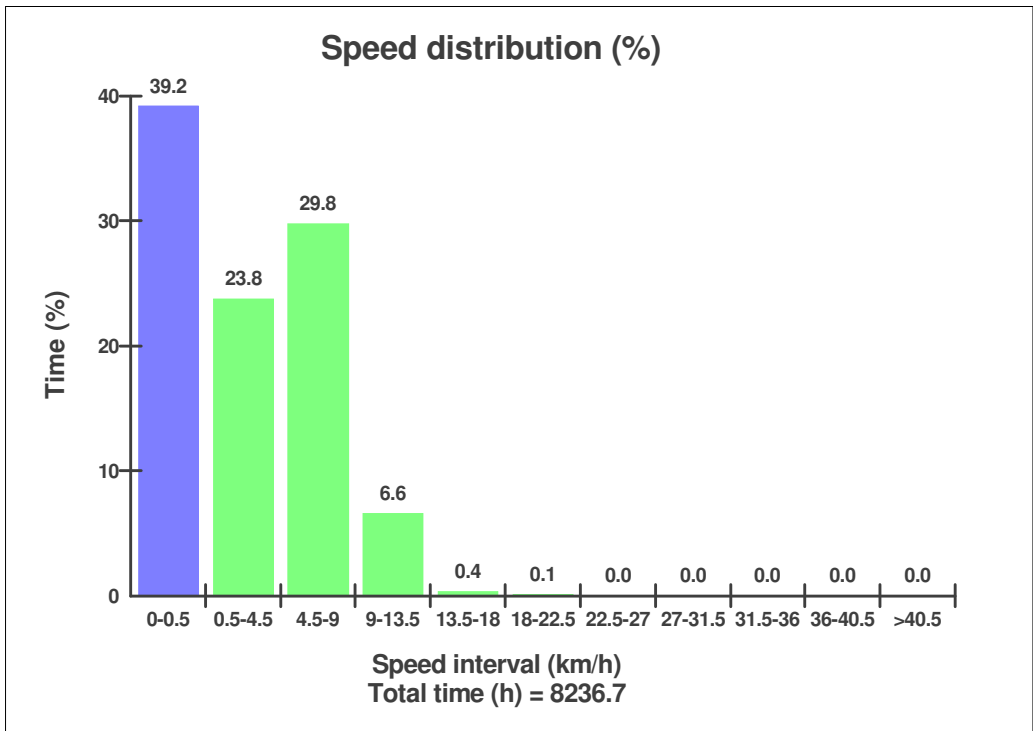
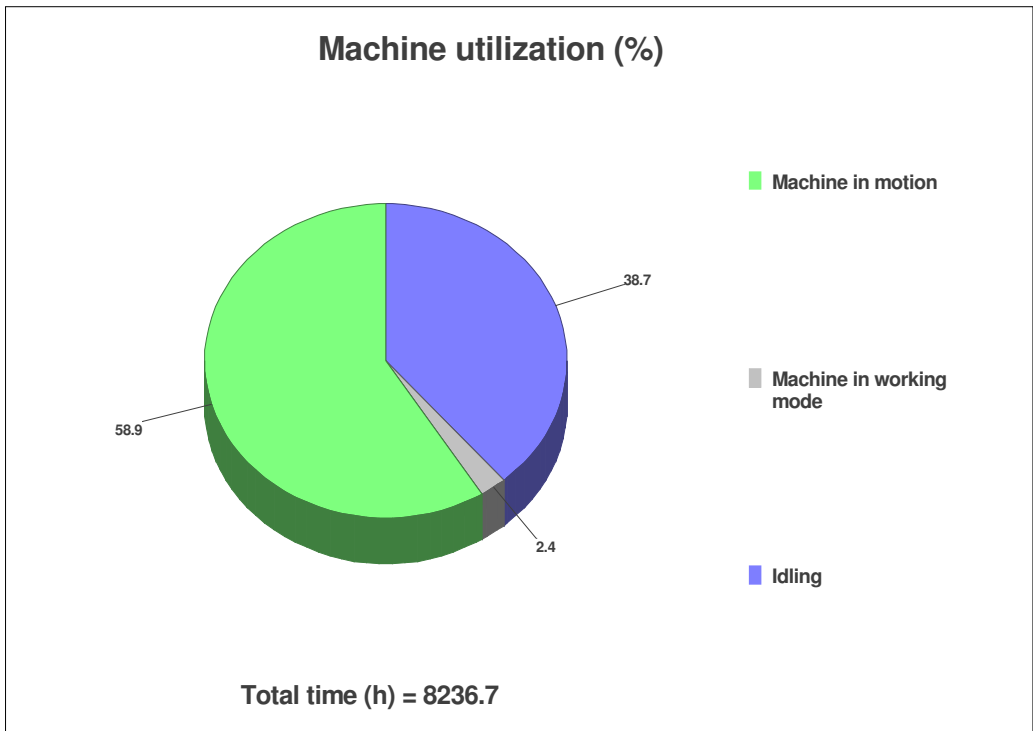


<b>Sales model:</b>	L150E	<b>Serial no:</b>	10420
<b>Customer name</b>	used oi	<b>Date:</b>	30/06/2010
<b>Country:</b>	United Kingdom	<b>Operating hours:</b>	8238.0
<b>Reading date:</b>	30/06/2010	<b>Workorder:</b>	3232
<b>Primary application:</b>	Shot Rock		

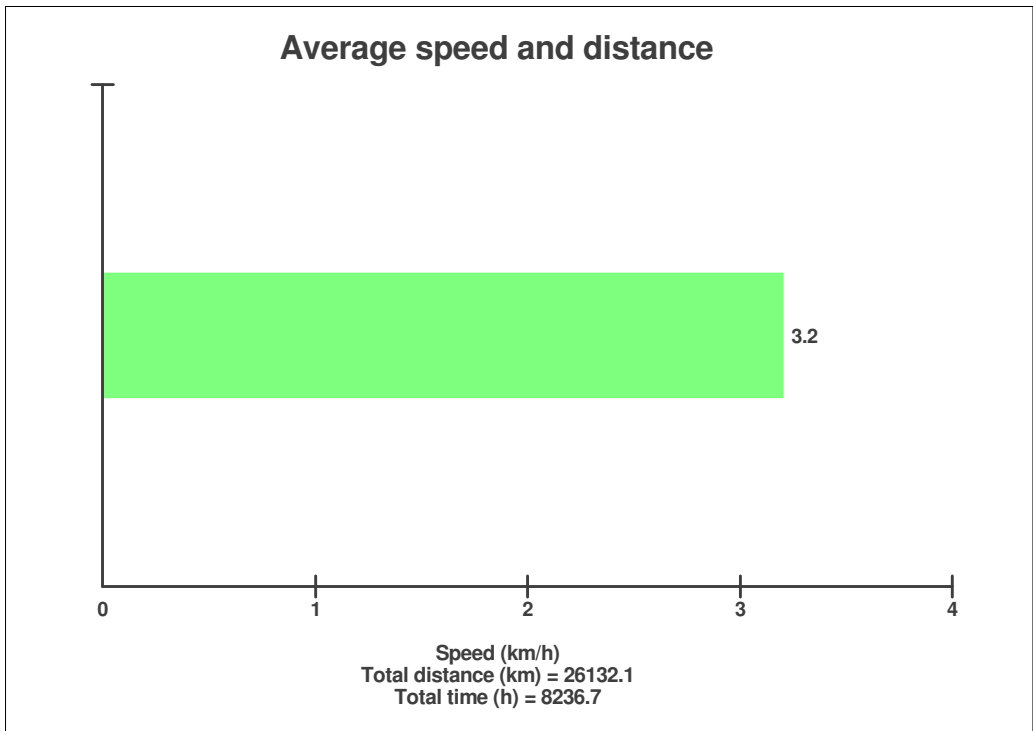
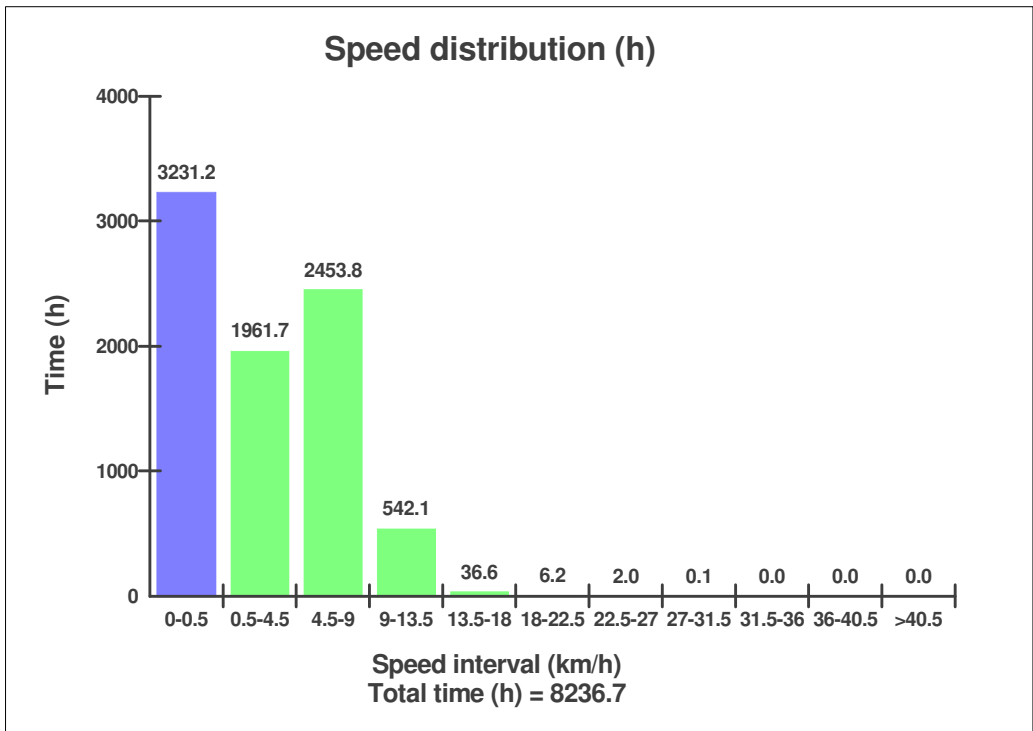
**Note:**

<b>Main equipment:</b>	<b>Type:</b>	<b>Equipment</b>	
<b>Boom Suspension System</b>		<b>Mounted</b>	
<b>Volume m3 (yd3) / Area m2 (ft2)</b>		<b>3,8 (5.0)</b>	<b>3,8 (40.9)</b>
<b>Attachment make</b>		<b>Volvo</b>	
<b>Tyre size/class</b>		<b>Sold without tyres</b>	
<b>Extra Counterweight</b>		<b>None</b>	
<b>Ballast</b>		<b>None</b>	
<b>Chains</b>		<b>Not mounted</b>	
<b>Attachment Interface</b>		<b>Pin-on</b>	
<b>Differential lock, text till "gömd" hotspot</b>		<b>Not mounted</b>	
<b>Main Attachment</b>		<b>Rock bucket</b>	

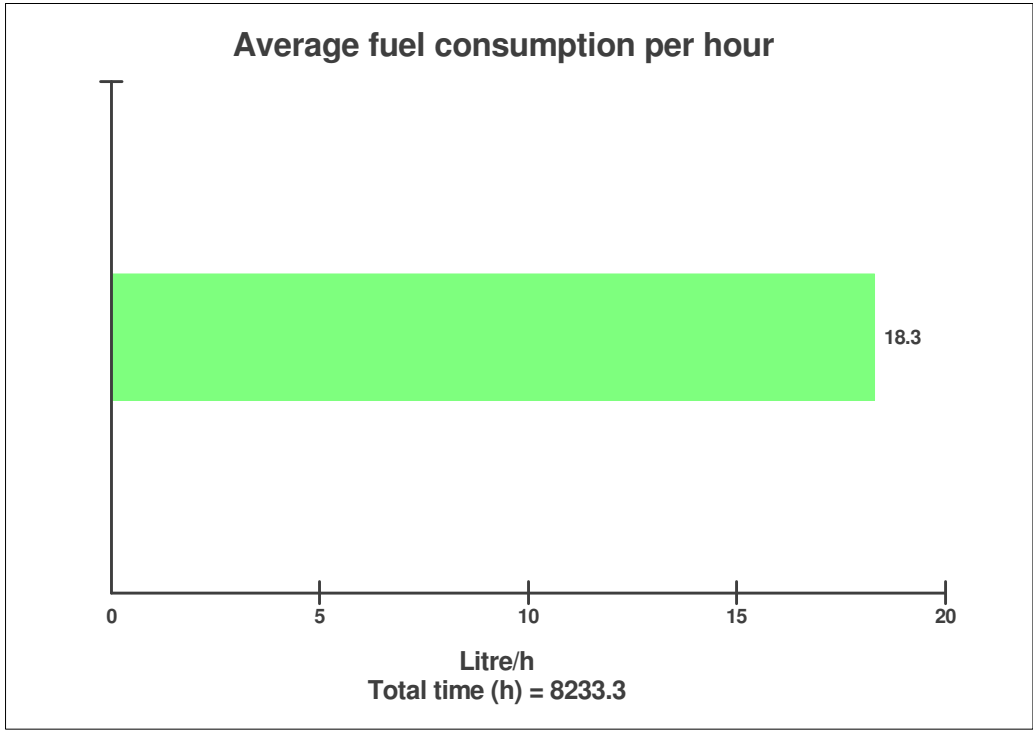
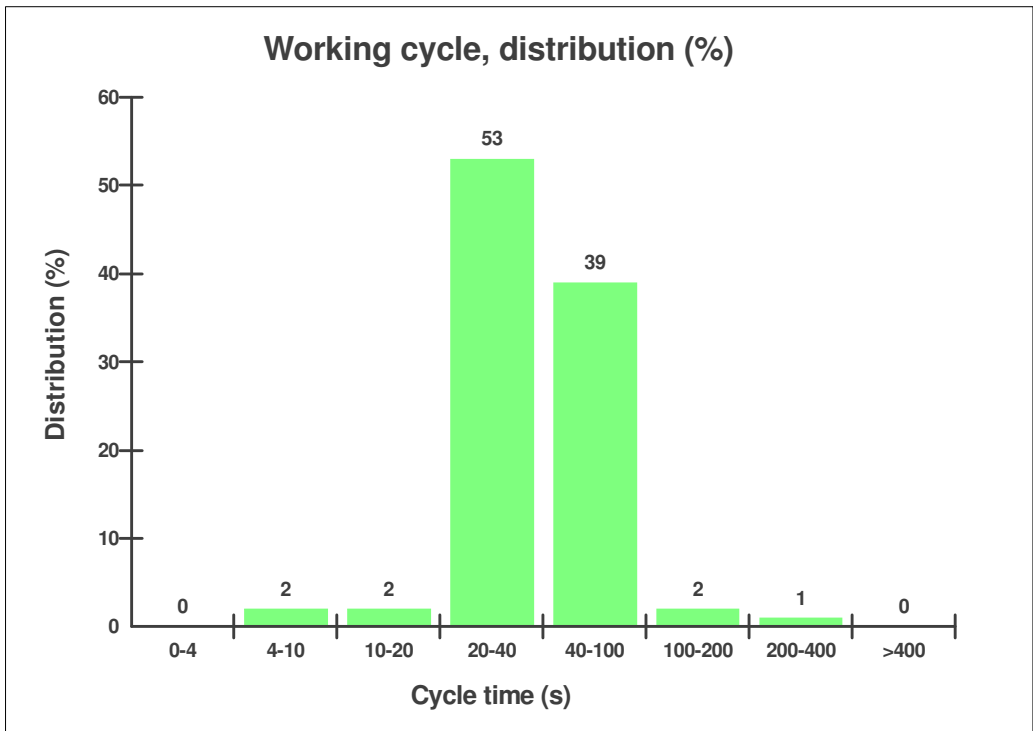
**Sales model:** L150E      **Serial no:** 10420      **Operating hours:** 8238.0  
**Customer name**      used oi      **Reading date:** 30/06/2010  
**Workorder:** 3232



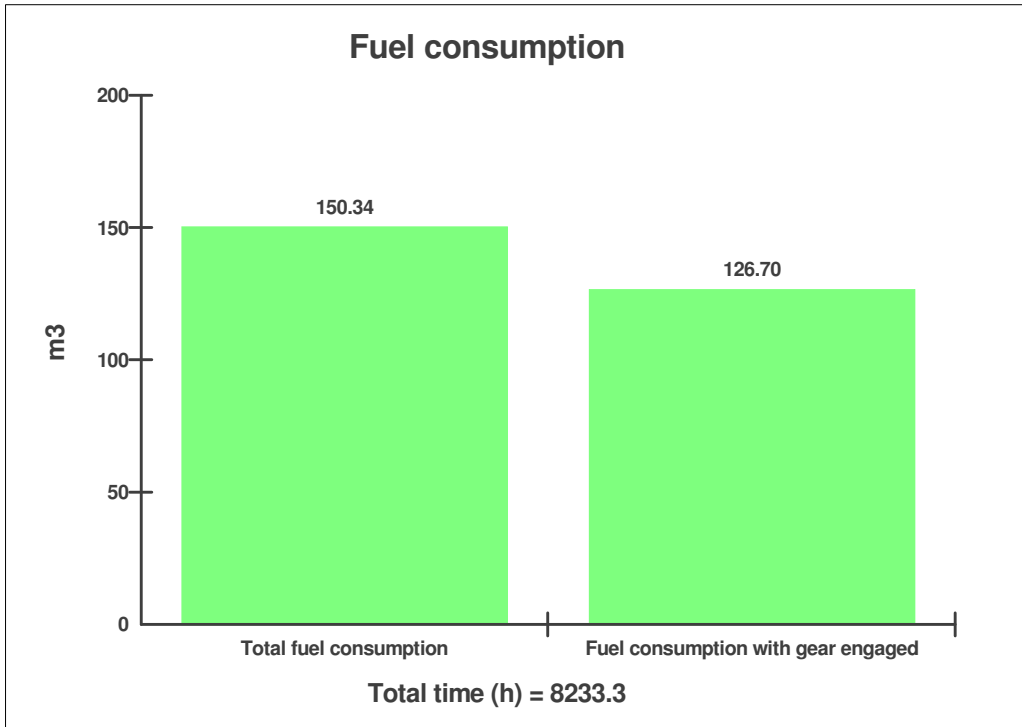
**Sales model:** L150E      **Serial no:** 10420      **Operating hours:** 8238.0  
**Customer name**      used oi      **Reading date:** 30/06/2010  
**Workorder:** 3232



**Sales model:** L150E      **Serial no:** 10420      **Operating hours:** 8238.0  
**Customer name**      used oi      **Reading date:** 30/06/2010  
**Workorder:** 3232



**Sales model:** L150E      **Serial no:** 10420      **Operating hours:** 8238.0  
**Customer name**      used oi      **Reading date:** 30/06/2010  
**Workorder:** 3232



**Engine ECU information**  
**Engine ECU information**

---

<b>ECU MID</b>	<b>128</b>
----------------	------------

---

<b>Hardware Part No</b>	<b>20814604</b>
-------------------------	-----------------

---

<b>Hardware Issue</b>	<b>1</b>
-----------------------	----------

---

<b>Software Part No</b>	<b>20762948</b>
-------------------------	-----------------

---

<b>Software Issue</b>	<b>1</b>
-----------------------	----------

---

<b>Serial no</b>	<b>6183246</b>
------------------	----------------

---

**Sales model:** L150E      **Serial no:** 10420      **Operating hours:** 8238.0  
**Customer name**      used oi      **Reading date:** 30/06/2010  
**Workorder:** 3232

**Engine ECU information****Engine ECU information**

---

**Dataset 1 Part No**      **11423670**

---

**Dataset 1 Issue**      **1**

---

**Dataset 2 Part No**      **11423678**

---

**Dataset 2 Issue**      **1**

**Sales model:** L150E      **Serial no:** 10420      **Operating hours:** 8238.0  
**Customer name**      used oi      **Reading date:** 30/06/2010  
**Workorder:** 3232

**Instrument ECU information**  
**Instrument ECU information**

---

<b>ECU MID</b>	<b>140</b>
<b>Hardware Part No</b>	<b>11184402</b>
<b>Hardware Issue</b>	<b>1</b>
<b>Software Part No</b>	<b>11443207</b>
<b>Serial no</b>	<b>6192060</b>
<b>Dataset 1 Part No</b>	<b>11443068</b>
<b>Dataset 2 Part No</b>	<b>11185739</b>

---

**Vehicle ECU information**  
**Vehicle ECU information**

---

<b>ECU MID</b>	<b>187</b>
<b>Hardware Part No</b>	<b>11185050</b>
<b>Hardware Issue</b>	<b>1</b>
<b>Software Part No</b>	<b>11443167</b>

---

**Sales model:** L150E      **Serial no:** 10420      **Operating hours:** 8238.0  
**Customer name**      used oi      **Reading date:** 30/06/2010  
**Workorder:**      3232

**Vehicle ECU information****Vehicle ECU information**

---

**Serial no**      **6100015**

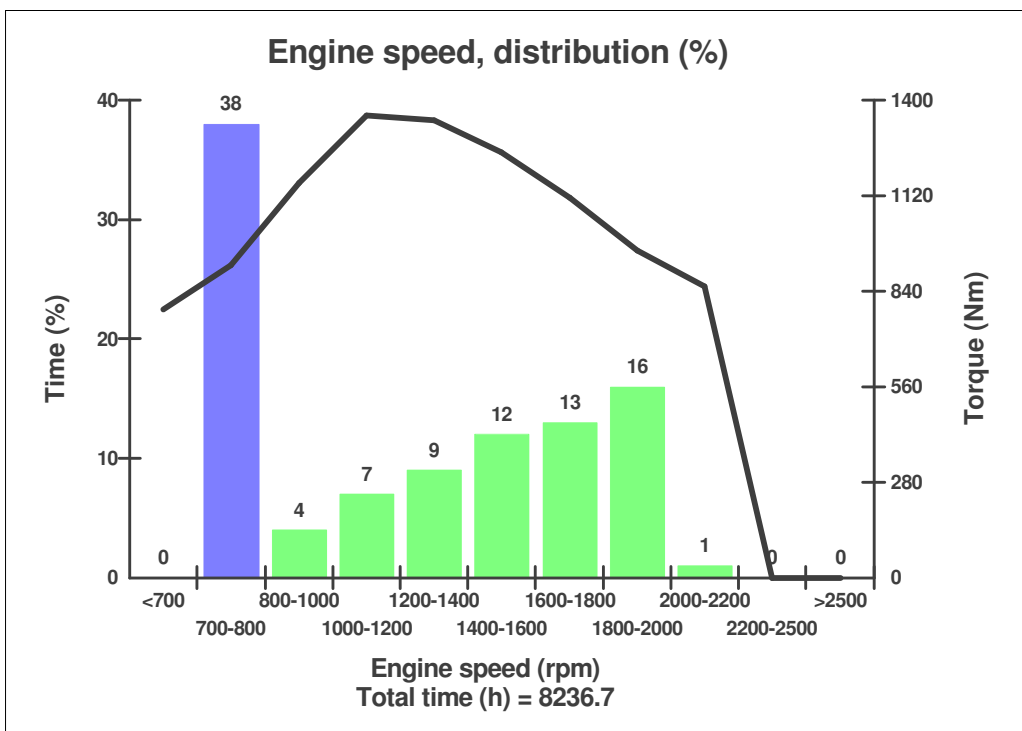
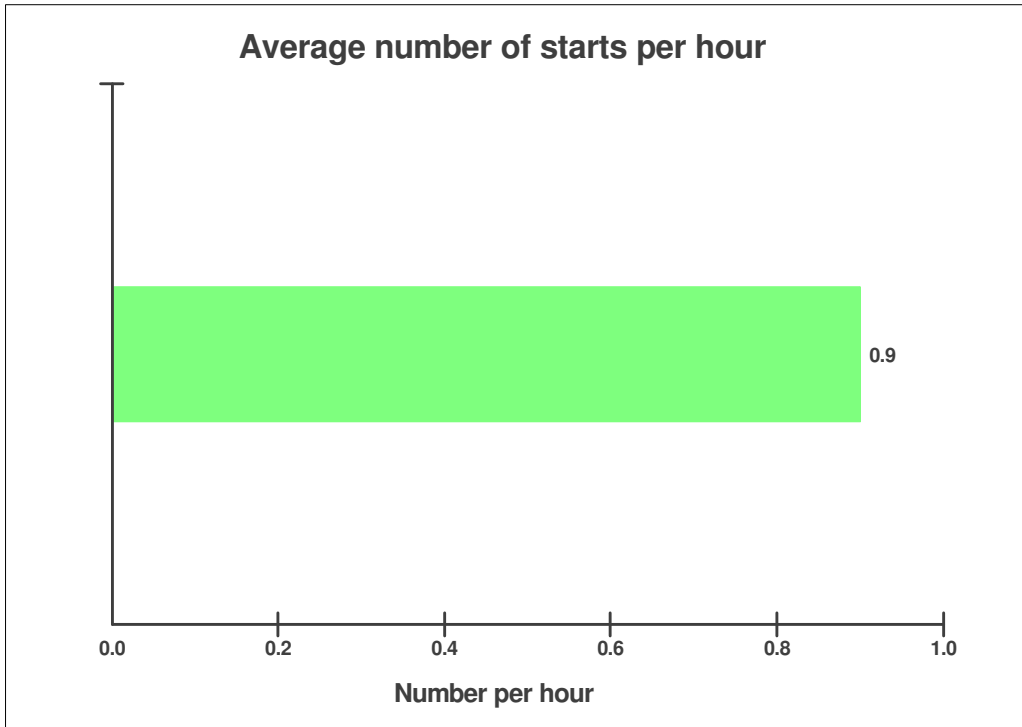
---

**Dataset 1 Part No**      **11443056**

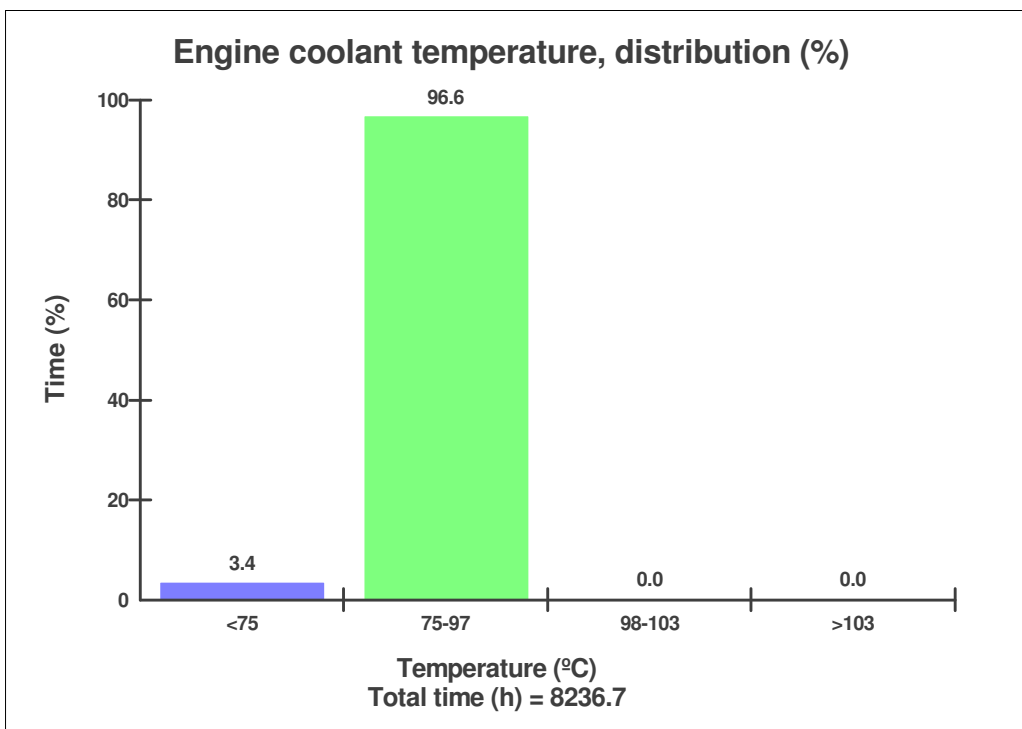
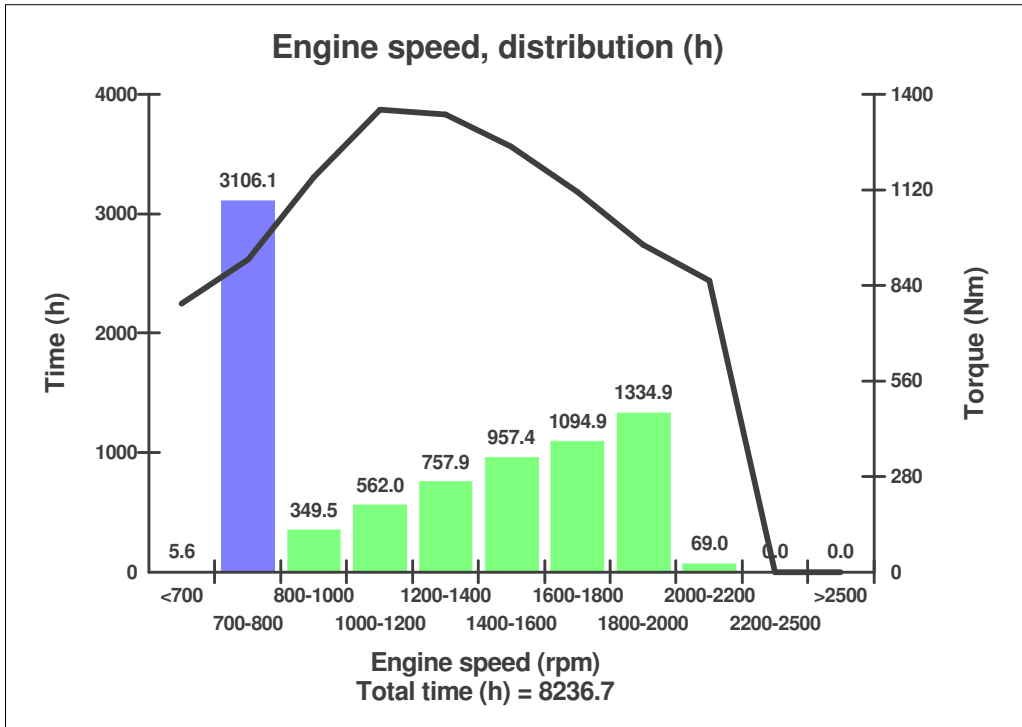
---

**Dataset 2 Part No**      **11443130**

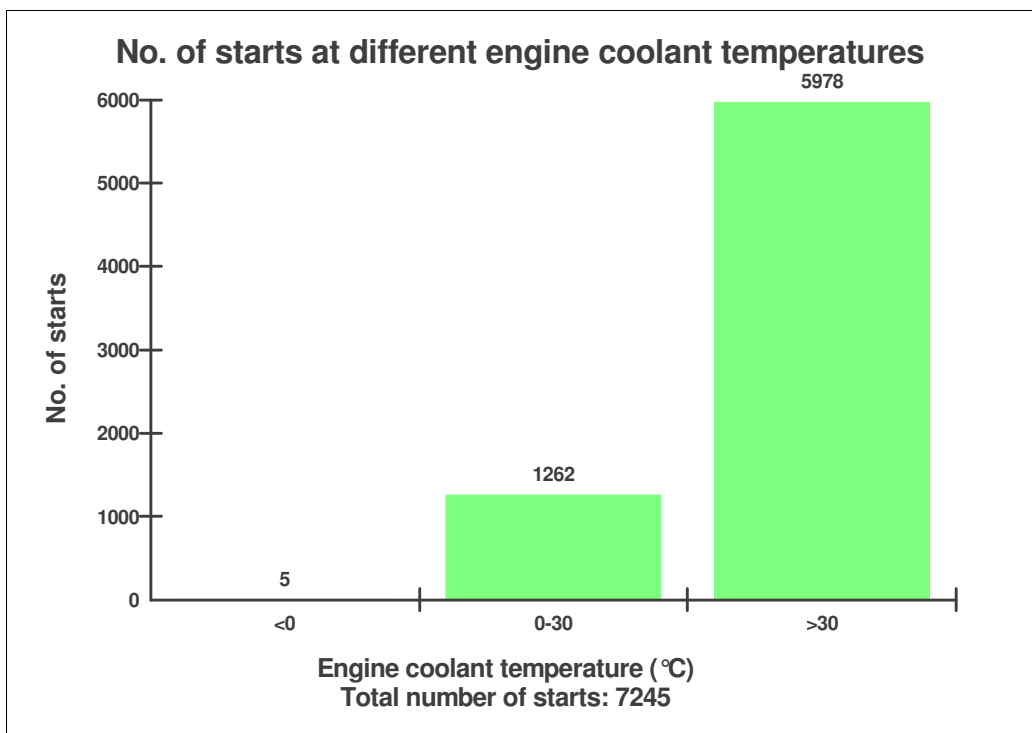
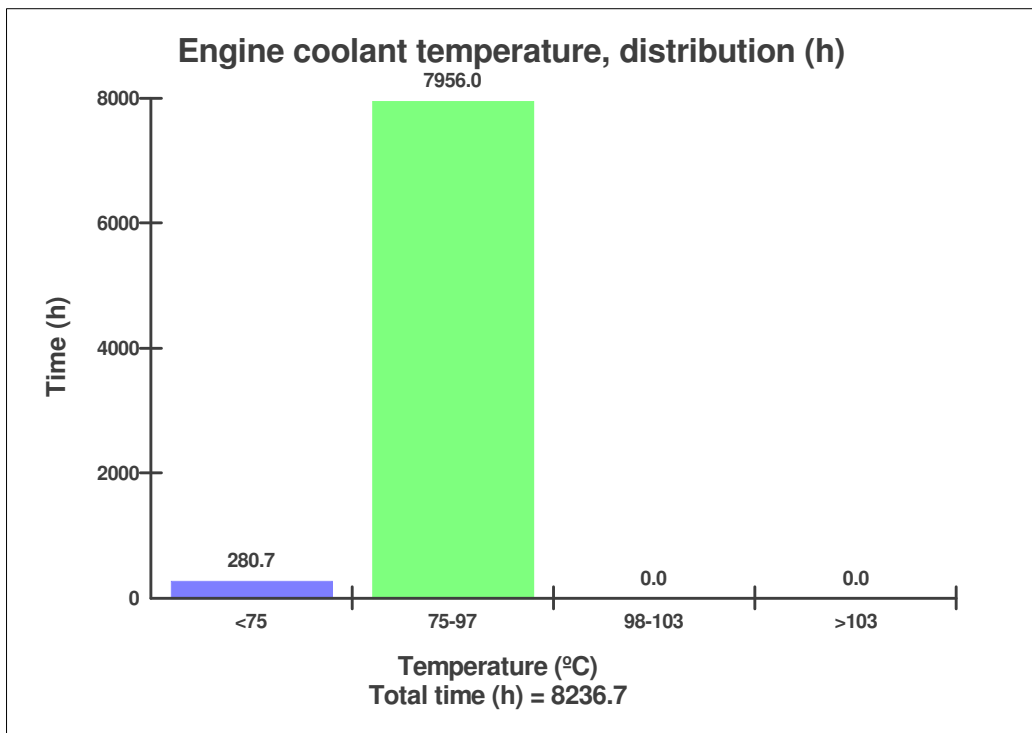
**Sales model:** L150E      **Serial no:** 10420      **Operating hours:** 8238.0  
**Customer name:** used oi      **Reading date:** 30/06/2010  
**Workorder:** 3232



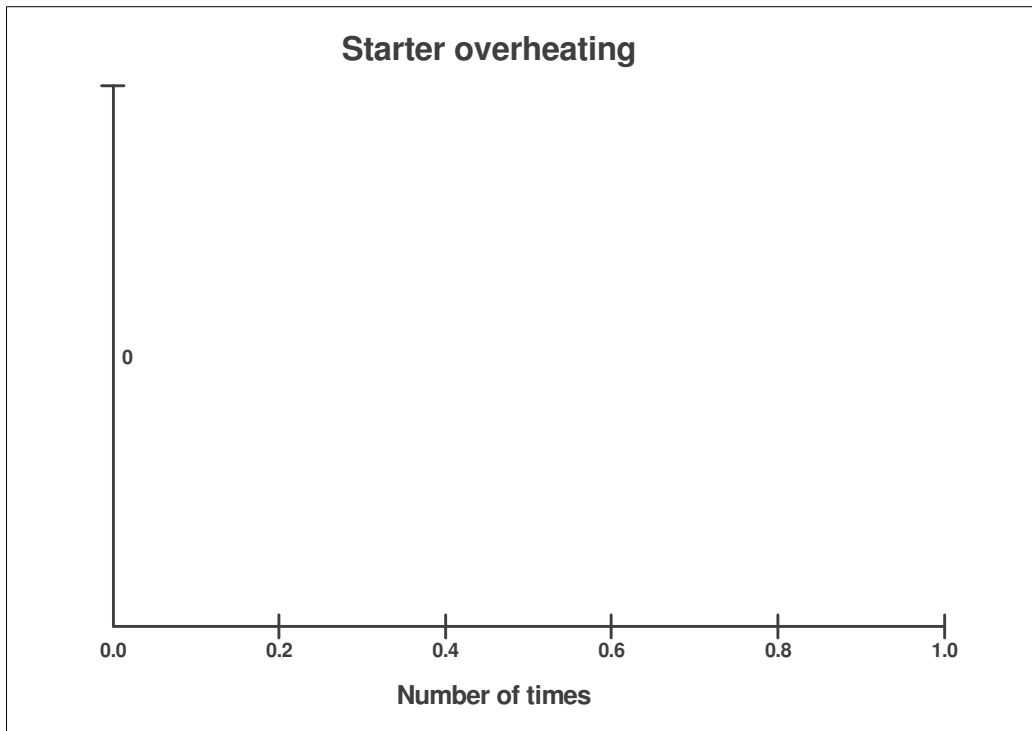
**Sales model:** L150E      **Serial no:** 10420      **Operating hours:** 8238.0  
**Customer name:** used oi      **Reading date:** 30/06/2010  
**Workorder:** 3232



**Sales model:** L150E      **Serial no:** 10420      **Operating hours:** 8238.0  
**Customer name**      used oi      **Reading date:** 30/06/2010  
**Workorder:** 3232



**Sales model:** L150E      **Serial no:** 10420      **Operating hours:** 8238.0  
**Customer name**      used oi      **Reading date:** 30/06/2010  
**Workorder:** 3232



**Alarm engine air filter**  
**Alarm engine air filter**  
**Total number of events: 0**

	Op hours	Year	Month	Day	Hour	Minute
J	0	2000	0	0	0	0
I	0	2000	0	0	0	0
H	0	2000	0	0	0	0
G	0	2000	0	0	0	0
F	0	2000	0	0	0	0
E	0	2000	0	0	0	0

**Sales model:** L150E      **Serial no:** 10420      **Operating hours:** 8238.0  
**Customer name**      used oi      **Reading date:** 30/06/2010  
**Workorder:** 3232

**Alarm engine air filter**  
**Alarm engine air filter**  
**Total number of events: 0**

	<b>Op hours</b>	<b>Year</b>	<b>Month</b>	<b>Day</b>	<b>Hour</b>	<b>Minute</b>
<b>D</b>	0	2000	0	0	0	0
<b>C</b>	0	2000	0	0	0	0
<b>A</b>	0	2000	0	0	0	0
<b>B</b>	0	2000	0	0	0	0

**Sales model:** L150E      **Serial no:** 10420      **Operating hours:** 8238.0  
**Customer name**      used oi      **Reading date:** 30/06/2010  
**Workorder:** 3232

**High engine coolant temperature****High engine coolant temperature****Total number of events: 0**

	<b>Op hours</b>	<b>Year</b>	<b>Month</b>	<b>Day</b>	<b>Hour</b>	<b>Minute</b>
<b>J</b>	0	2000	0	0	0	0
<b>I</b>	0	2000	0	0	0	0
<b>H</b>	0	2000	0	0	0	0
<b>G</b>	0	2000	0	0	0	0
<b>F</b>	0	2000	0	0	0	0
<b>E</b>	0	2000	0	0	0	0
<b>D</b>	0	2000	0	0	0	0
<b>C</b>	0	2000	0	0	0	0
<b>A</b>	0	2000	0	0	0	0
<b>B</b>	0	2000	0	0	0	0

**Low engine oil pressure****Low engine oil pressure****Total number of events: 0**

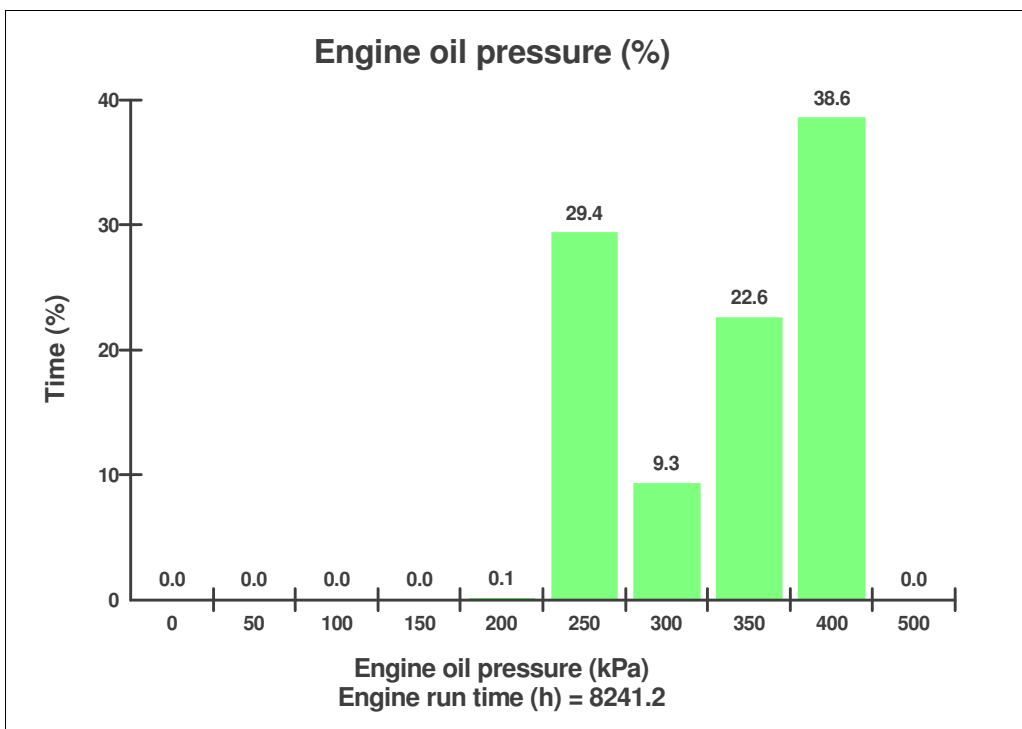
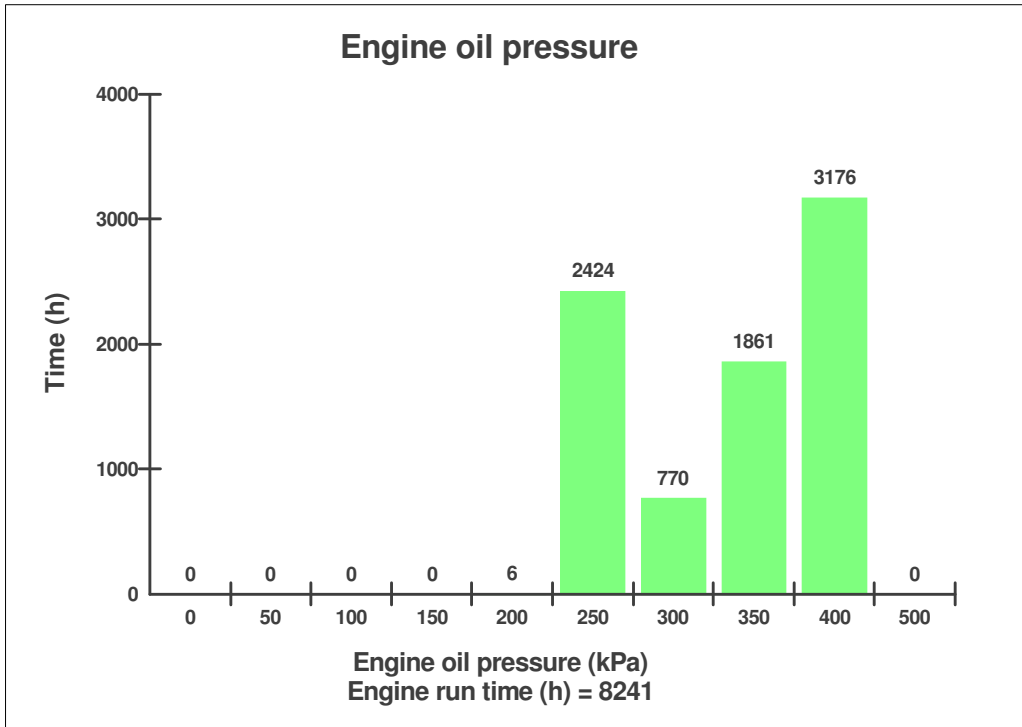
	<b>Op hours</b>	<b>Year</b>	<b>Month</b>	<b>Day</b>	<b>Hour</b>	<b>Minute</b>
--	-----------------	-------------	--------------	------------	-------------	---------------

**Sales model:** L150E      **Serial no:** 10420      **Operating hours:** 8238.0  
**Customer name**      used oi      **Reading date:** 30/06/2010  
**Workorder:** 3232

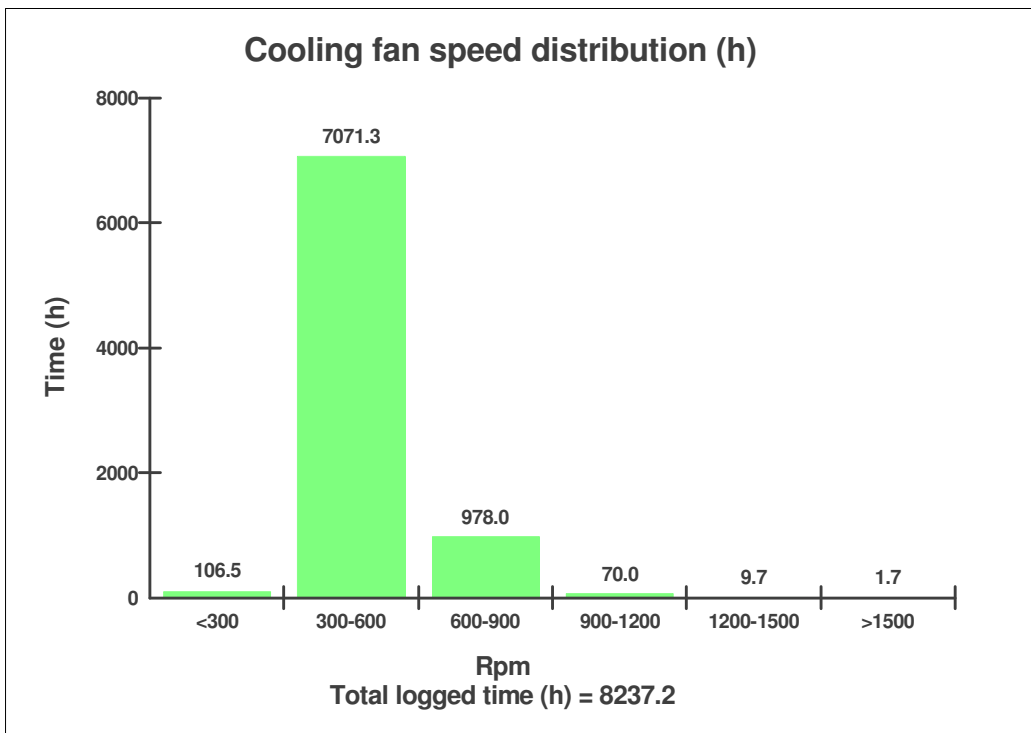
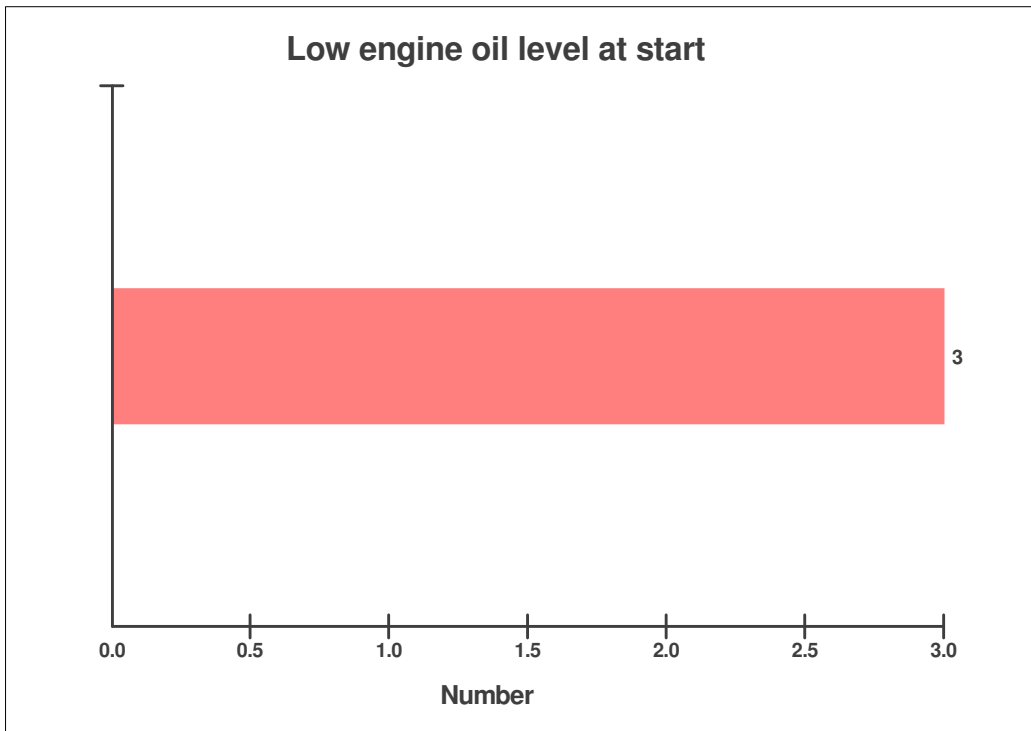
**Low engine oil pressure**  
**Low engine oil pressure**  
**Total number of events: 0**

	Op hours	Year	Month	Day	Hour	Minute
J	0	2000	0	0	0	0
I	0	2000	0	0	0	0
H	0	2000	0	0	0	0
G	0	2000	0	0	0	0
F	0	2000	0	0	0	0
E	0	2000	0	0	0	0
D	0	2000	0	0	0	0
C	0	2000	0	0	0	0
A	0	2000	0	0	0	0
B	0	2000	0	0	0	0

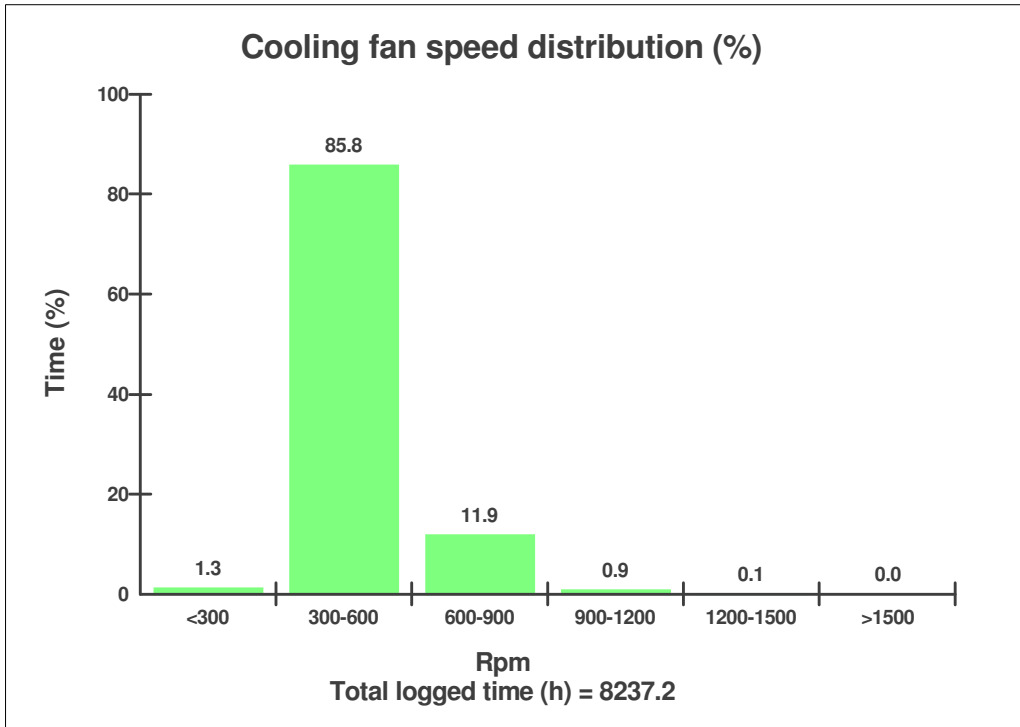
**Sales model:** L150E      **Serial no:** 10420      **Operating hours:** 8238.0  
**Customer name:** used oi      **Reading date:** 30/06/2010  
**Workorder:** 3232



**Sales model:** L150E      **Serial no:** 10420      **Operating hours:** 8238.0  
**Customer name**      used oi      **Reading date:** 30/06/2010  
**Workorder:** 3232



**Sales model:** L150E      **Serial no:** 10420      **Operating hours:** 8238.0  
**Customer name**      used oi      **Reading date:** 30/06/2010  
**Workorder:** 3232



**High voltage**  
**High voltage**  
**Total number of events: 0**

	Op hours	Year	Month	Day	Hour	Minute
J	0	2000	0	0	0	0
I	0	2000	0	0	0	0
H	0	2000	0	0	0	0
G	0	2000	0	0	0	0
F	0	2000	0	0	0	0
E	0	2000	0	0	0	0

**Sales model:** L150E      **Serial no:** 10420      **Operating hours:** 8238.0  
**Customer name**      used oi      **Reading date:** 30/06/2010  
**Workorder:** 3232

**High voltage**

**High voltage**

**Total number of events: 0**

	<b>Op hours</b>	<b>Year</b>	<b>Month</b>	<b>Day</b>	<b>Hour</b>	<b>Minute</b>
<b>D</b>	0	2000	0	0	0	0
<b>C</b>	0	2000	0	0	0	0
<b>A</b>	0	2000	0	0	0	0
<b>B</b>	0	2000	0	0	0	0

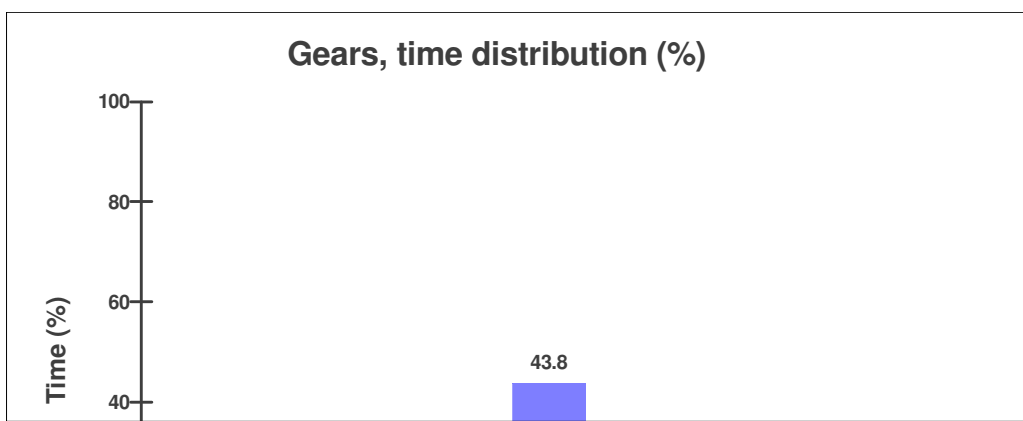
**Sales model:** L150E      **Serial no:** 10420      **Operating hours:** 8238.0  
**Customer name**      used oi      **Reading date:** 30/06/2010  
**Workorder:** 3232

**Low voltage**

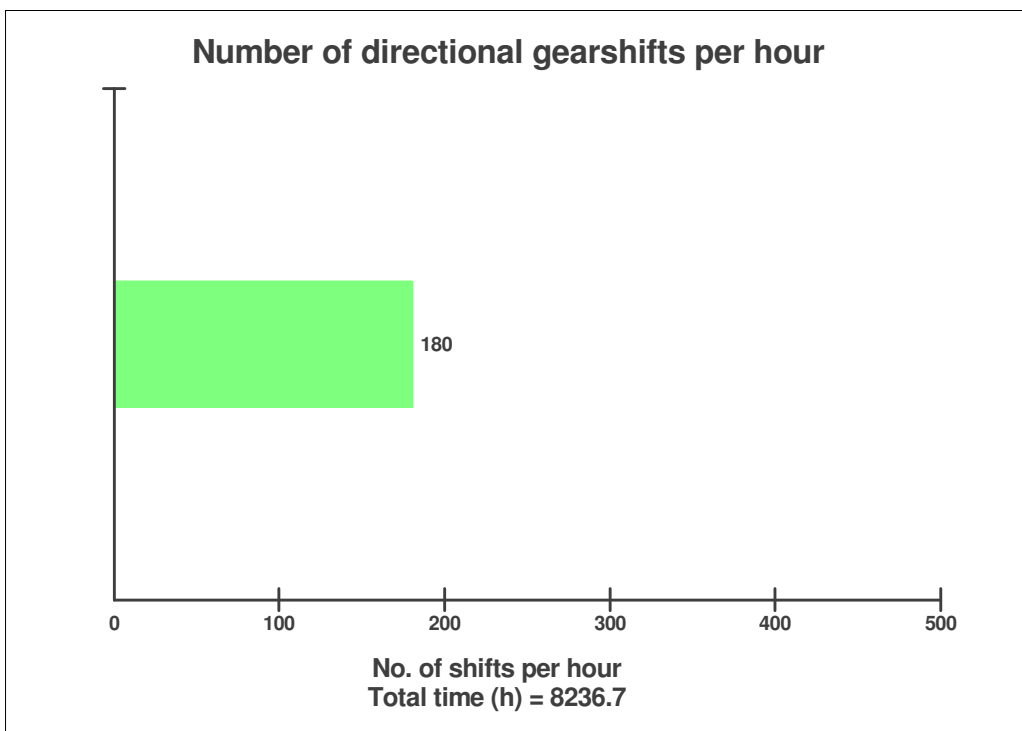
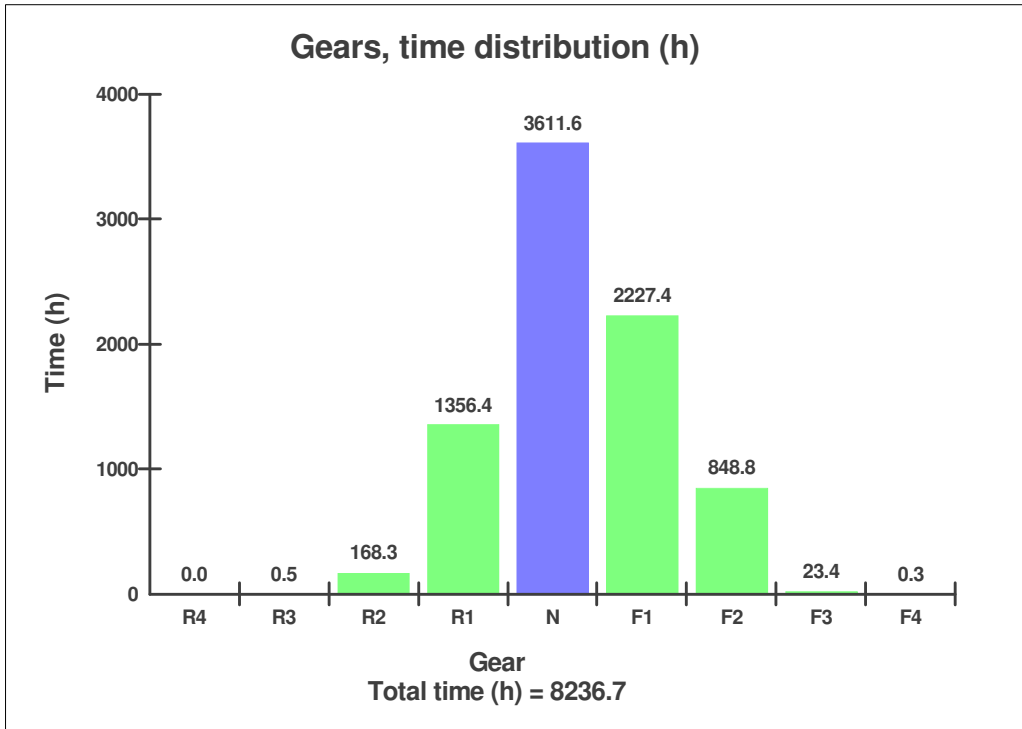
**Low voltage**

**Total number of events: 36**

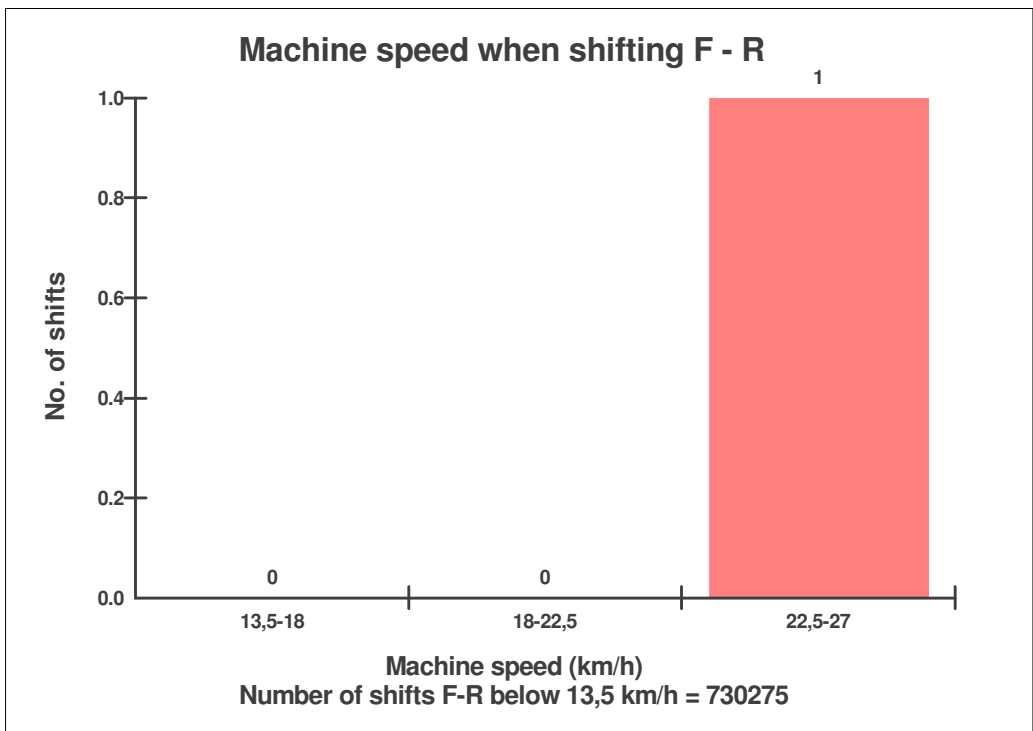
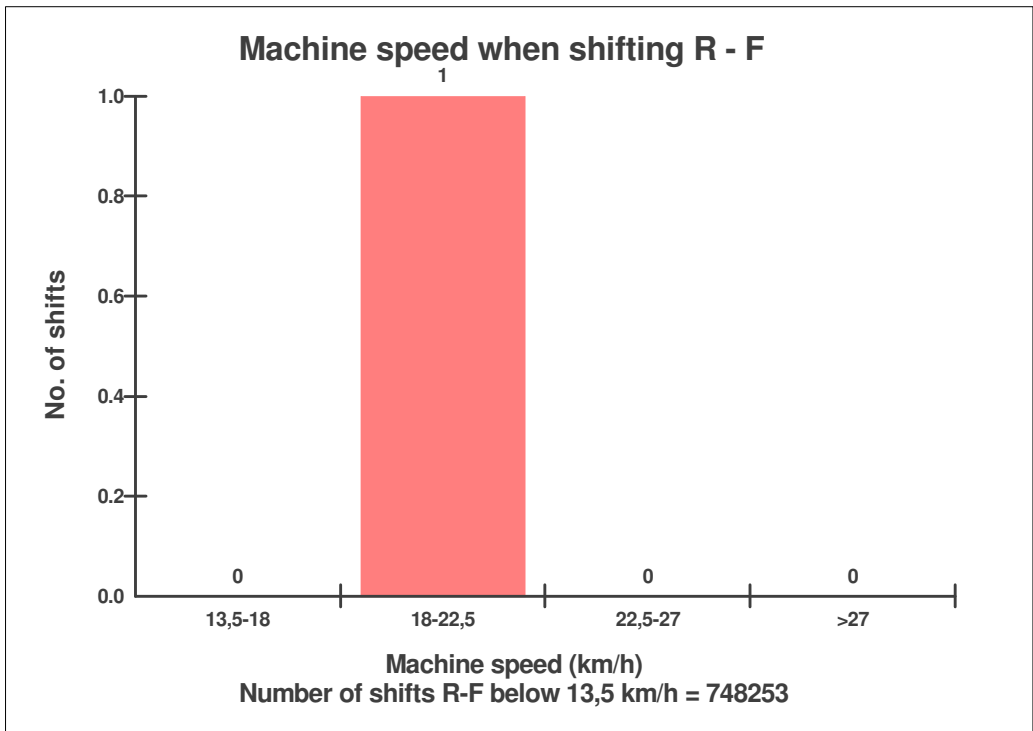
	Op hours	Year	Month	Day	Hour	Minute
J	6475	2009	7	25	11	22
I	6475	2009	7	25	11	21
H	6475	2009	7	25	11	21
G	6475	2009	7	25	11	21
F	6475	2009	7	25	11	23
E	6475	2009	7	25	11	23
D	6475	2009	7	25	11	22
C	6475	2009	7	25	11	22
A	6475	2009	7	25	11	22
B	6475	2009	7	25	11	22



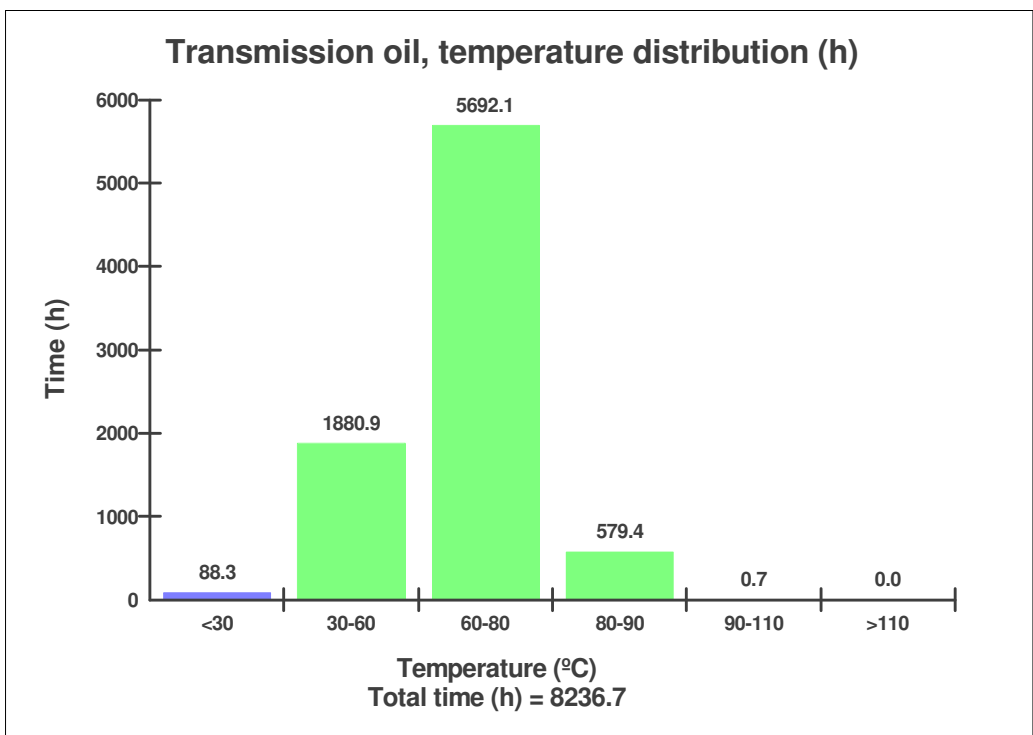
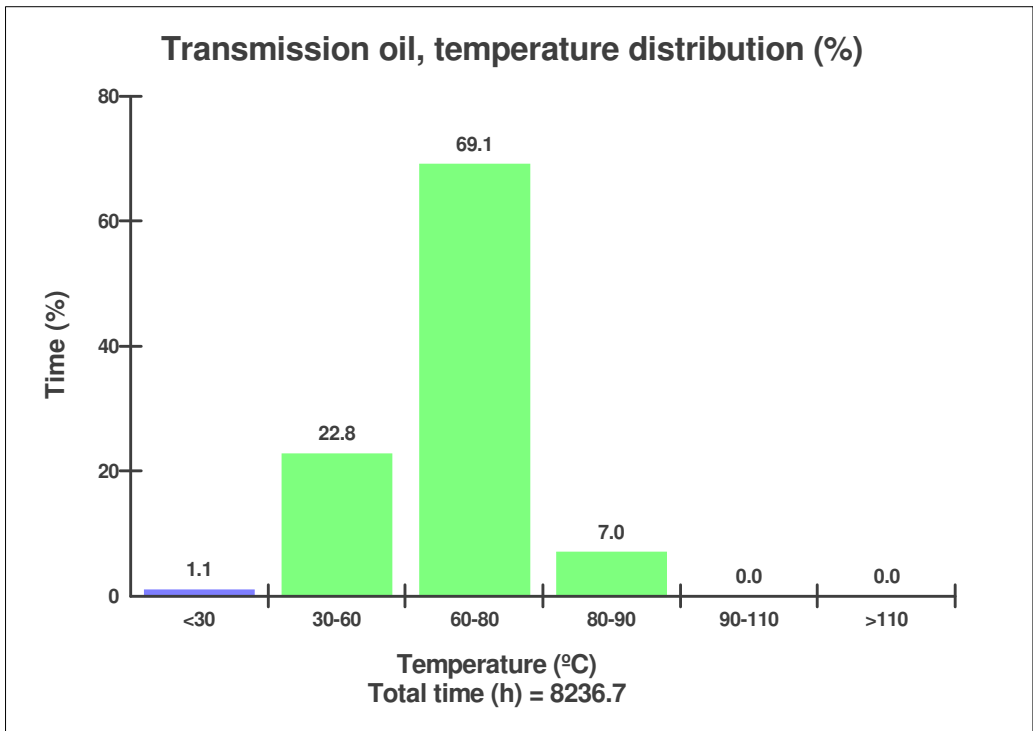
**Sales model:** L150E      **Serial no:** 10420      **Operating hours:** 8238.0  
**Customer name**      used oi      **Reading date:** 30/06/2010  
**Workorder:** 3232



**Sales model:** L150E      **Serial no:** 10420      **Operating hours:** 8238.0  
**Customer name**      used oi      **Reading date:** 30/06/2010  
**Workorder:** 3232



**Sales model:** L150E      **Serial no:** 10420      **Operating hours:** 8238.0  
**Customer name**      used oi      **Reading date:** 30/06/2010  
**Workorder:** 3232



**Sales model:** L150E      **Serial no:** 10420      **Operating hours:** 8238.0  
**Customer name**      used oi      **Reading date:** 30/06/2010  
**Workorder:** 3232

**Low transmission oil pressure**

**Low transmission oil pressure**

**Total number of events: 0**

	<b>Op hours</b>	<b>Year</b>	<b>Month</b>	<b>Day</b>	<b>Hour</b>	<b>Minute</b>
<b>J</b>	0	2000	0	0	0	0
<b>I</b>	0	2000	0	0	0	0
<b>H</b>	0	2000	0	0	0	0
<b>G</b>	0	2000	0	0	0	0
<b>F</b>	0	2000	0	0	0	0
<b>E</b>	0	2000	0	0	0	0
<b>D</b>	0	2000	0	0	0	0
<b>C</b>	0	2000	0	0	0	0
<b>A</b>	0	2000	0	0	0	0
<b>B</b>	0	2000	0	0	0	0

**High transmission oil temperature**

**High transmission oil temperature**

**Total number of events: 0**

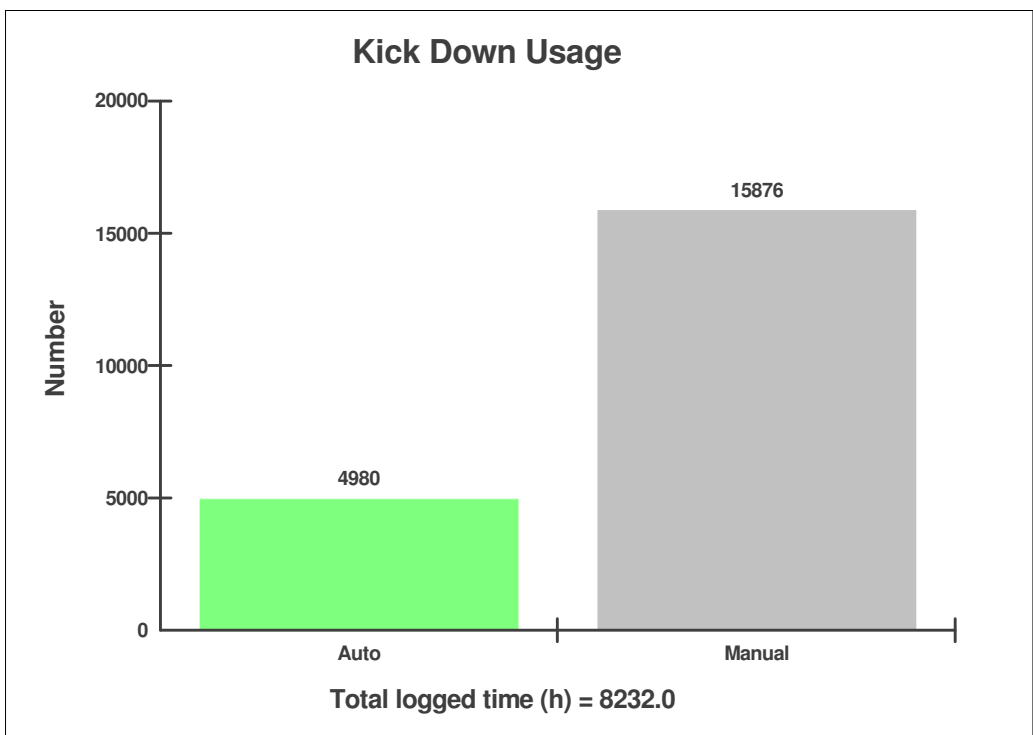
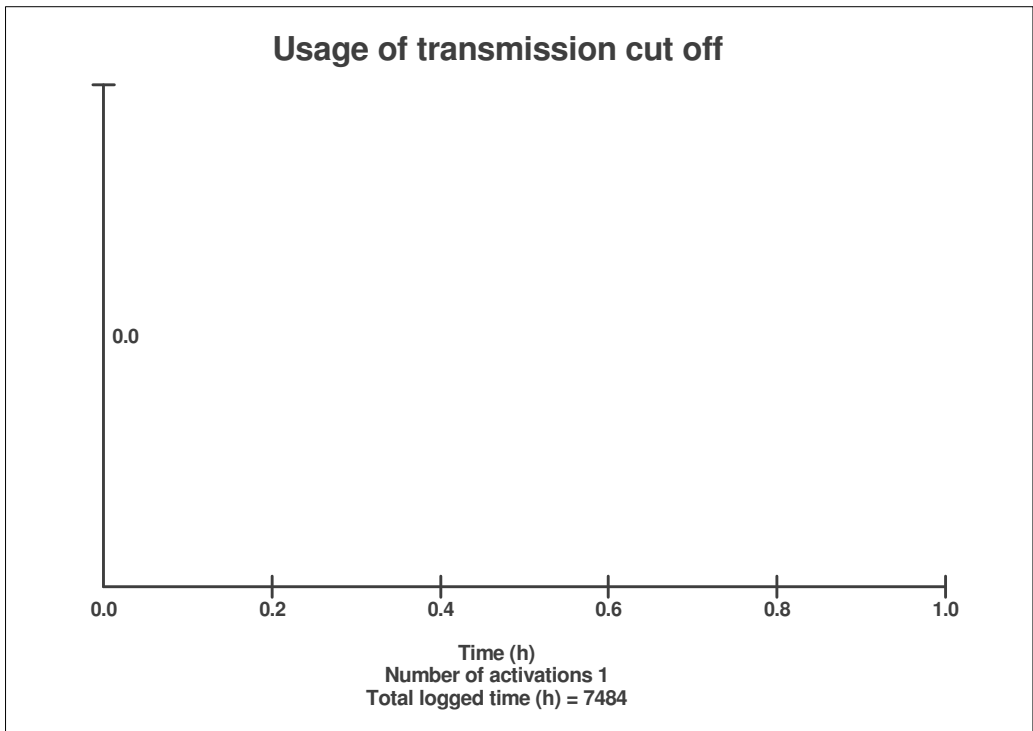
	<b>Op hours</b>	<b>Year</b>	<b>Month</b>	<b>Day</b>	<b>Hour</b>	<b>Minute</b>
--	-----------------	-------------	--------------	------------	-------------	---------------

**Sales model:** L150E      **Serial no:** 10420      **Operating hours:** 8238.0  
**Customer name**      used oi      **Reading date:** 30/06/2010  
**Workorder:** 3232

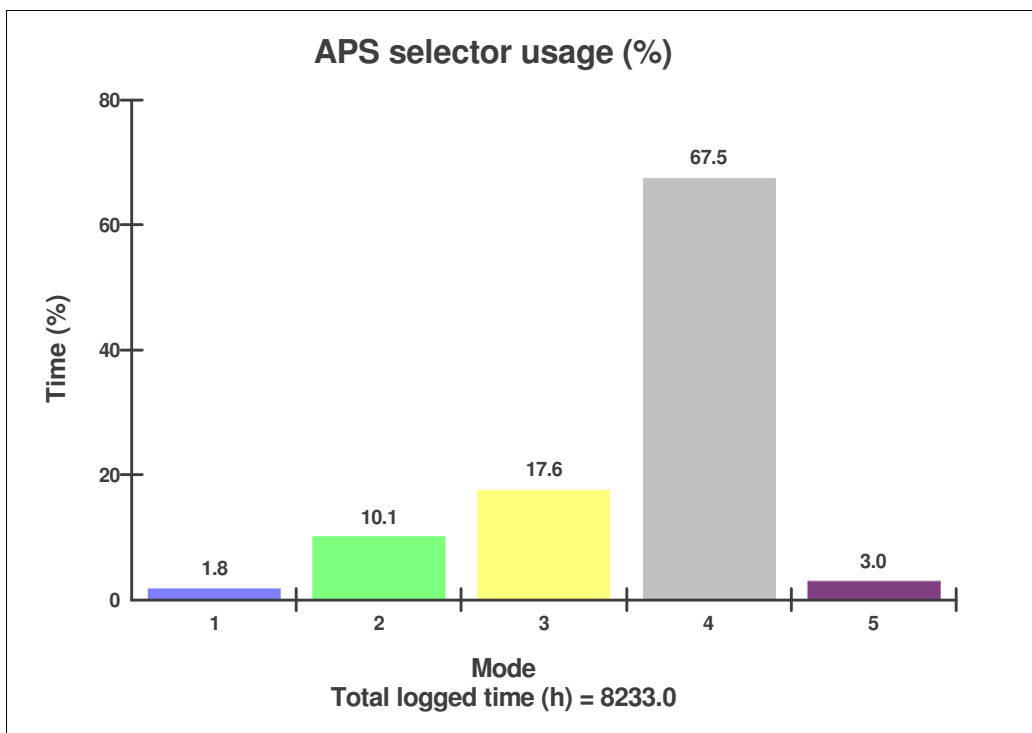
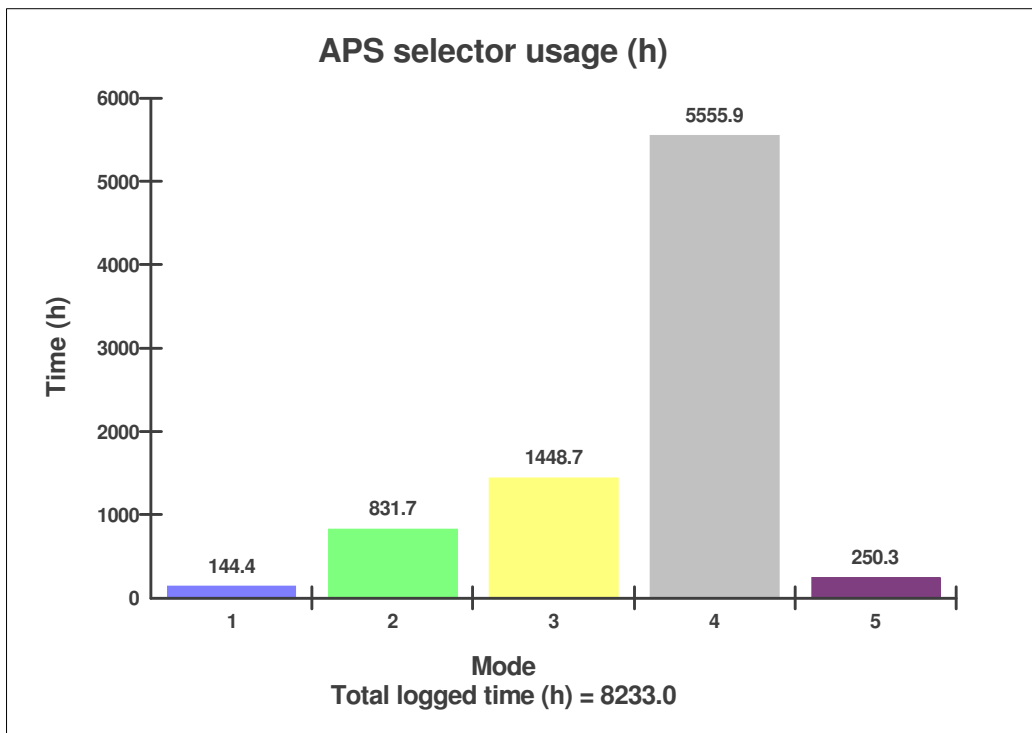
**High transmission oil temperature**  
**High transmission oil temperature**  
**Total number of events: 0**

	Op hours	Year	Month	Day	Hour	Minute
J	0	2000	0	0	0	0
I	0	2000	0	0	0	0
H	0	2000	0	0	0	0
G	0	2000	0	0	0	0
F	0	2000	0	0	0	0
E	0	2000	0	0	0	0
D	0	2000	0	0	0	0
C	0	2000	0	0	0	0
A	0	2000	0	0	0	0
B	0	2000	0	0	0	0

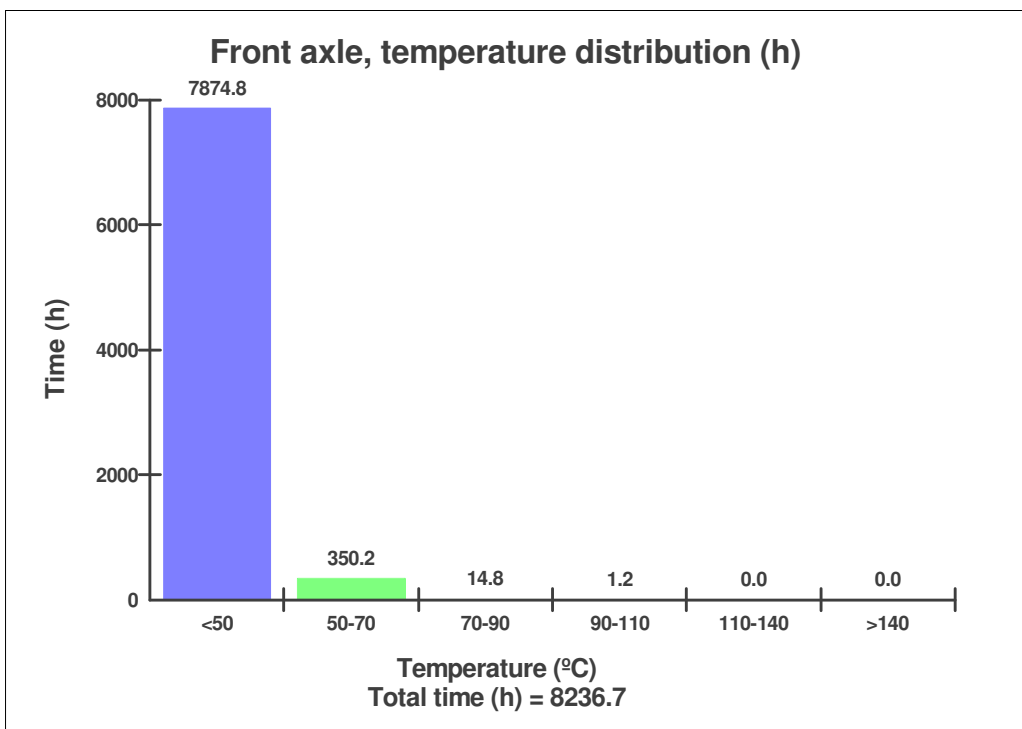
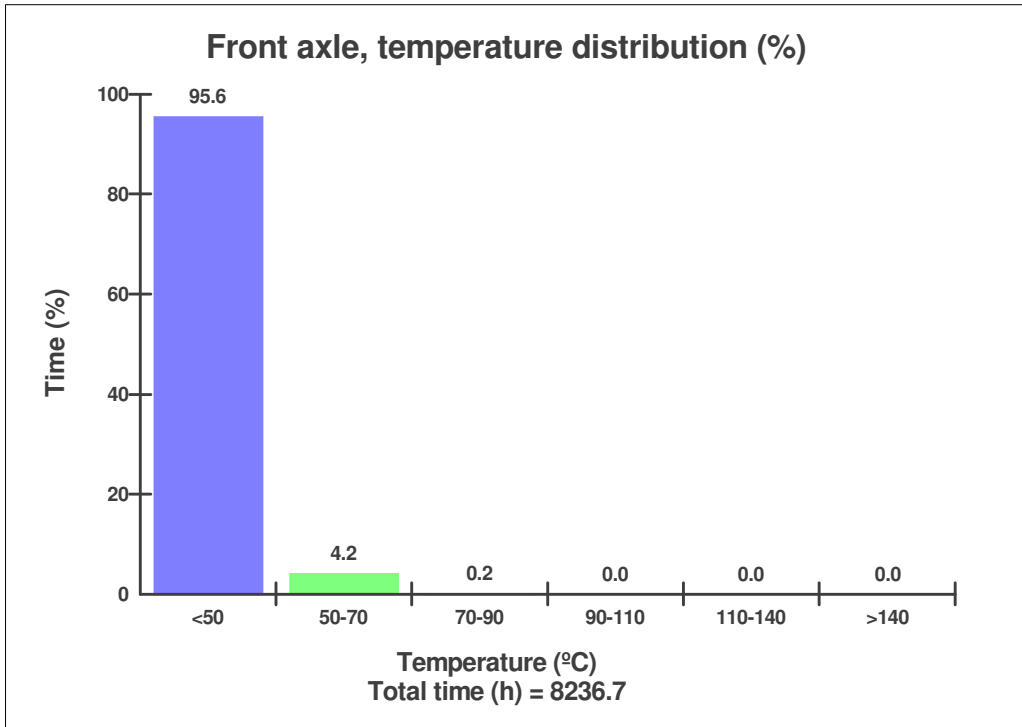
**Sales model:** L150E      **Serial no:** 10420      **Operating hours:** 8238.0  
**Customer name**      used oi      **Reading date:** 30/06/2010  
**Workorder:** 3232



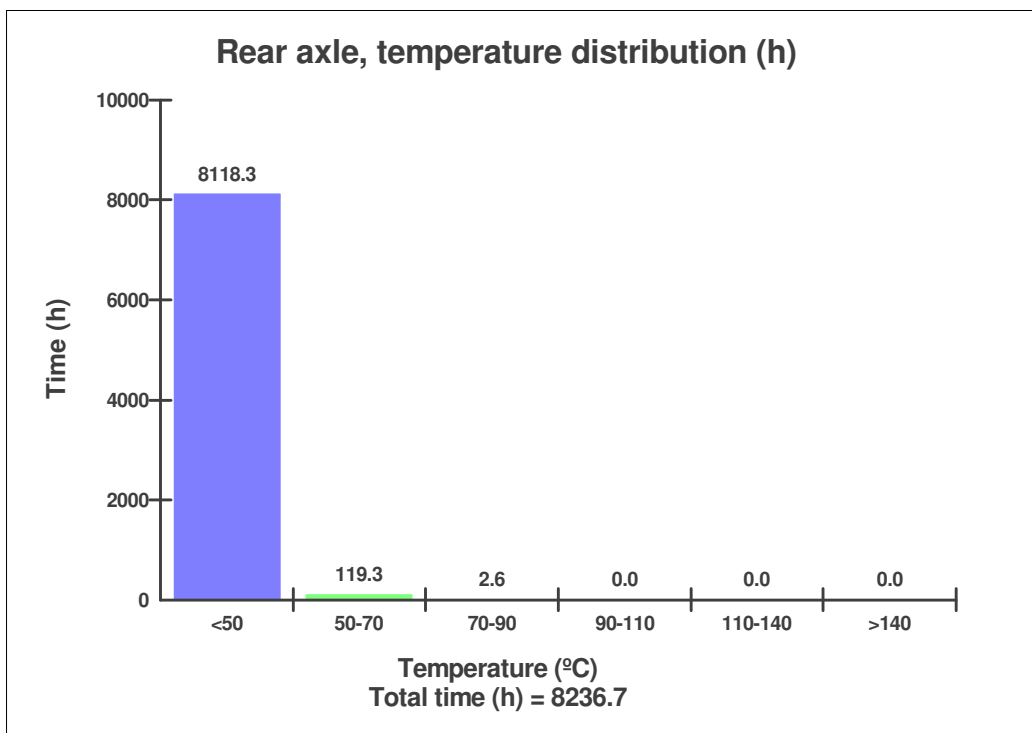
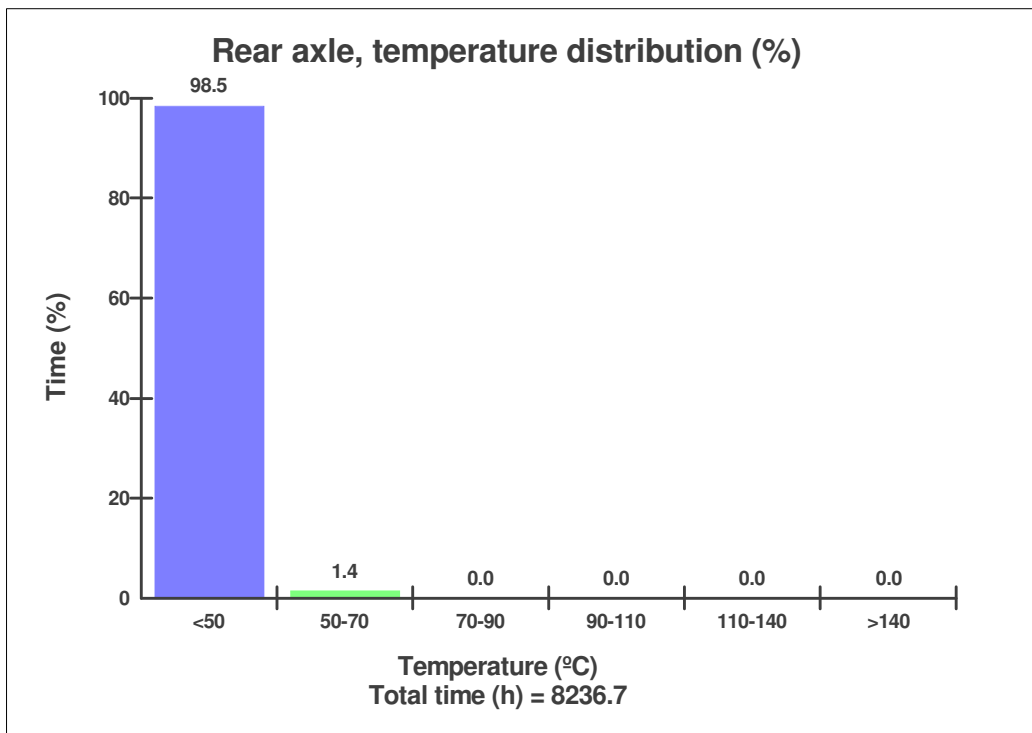
**Sales model:** L150E      **Serial no:** 10420      **Operating hours:** 8238.0  
**Customer name:** used oi      **Reading date:** 30/06/2010  
**Workorder:** 3232



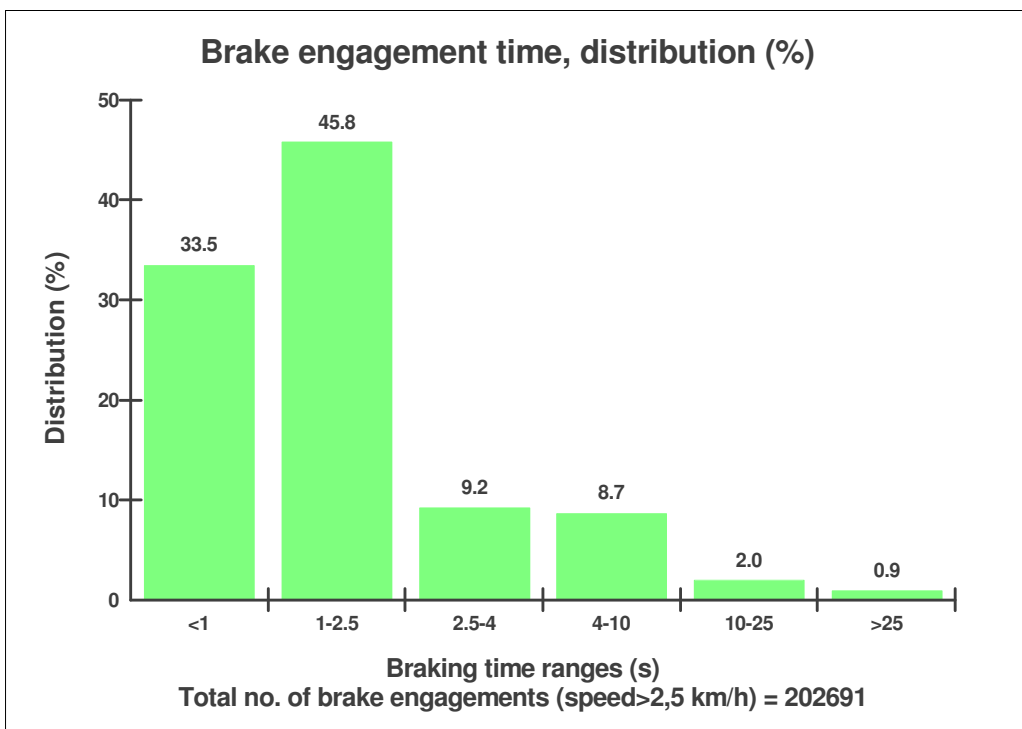
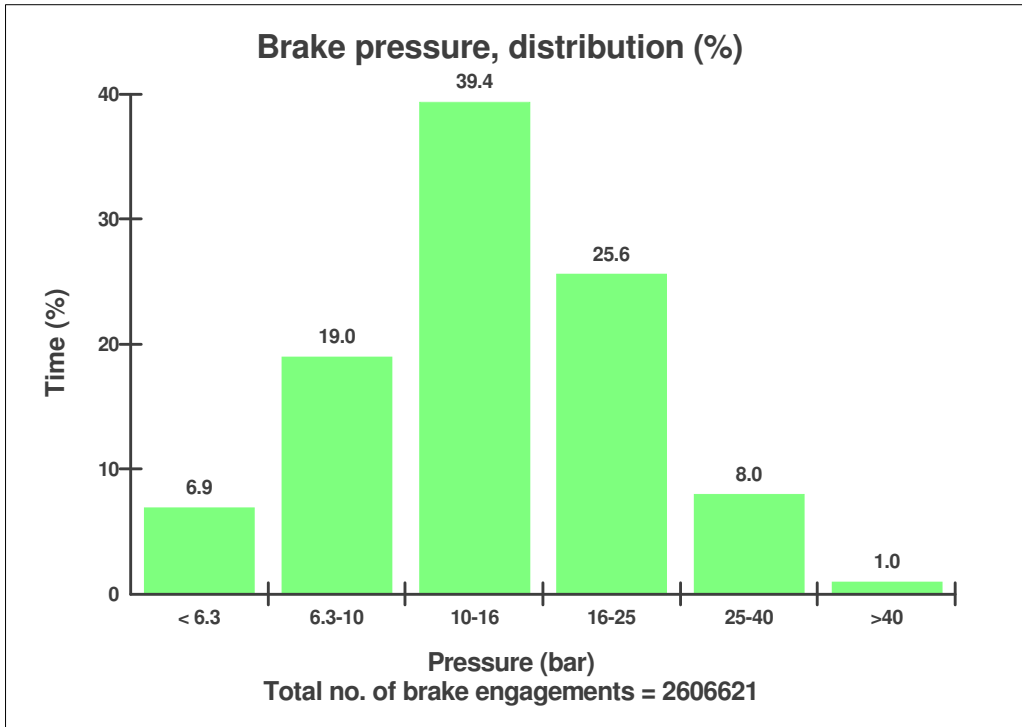
**Sales model:** L150E      **Serial no:** 10420      **Operating hours:** 8238.0  
**Customer name:** used oi      **Reading date:** 30/06/2010  
**Workorder:** 3232



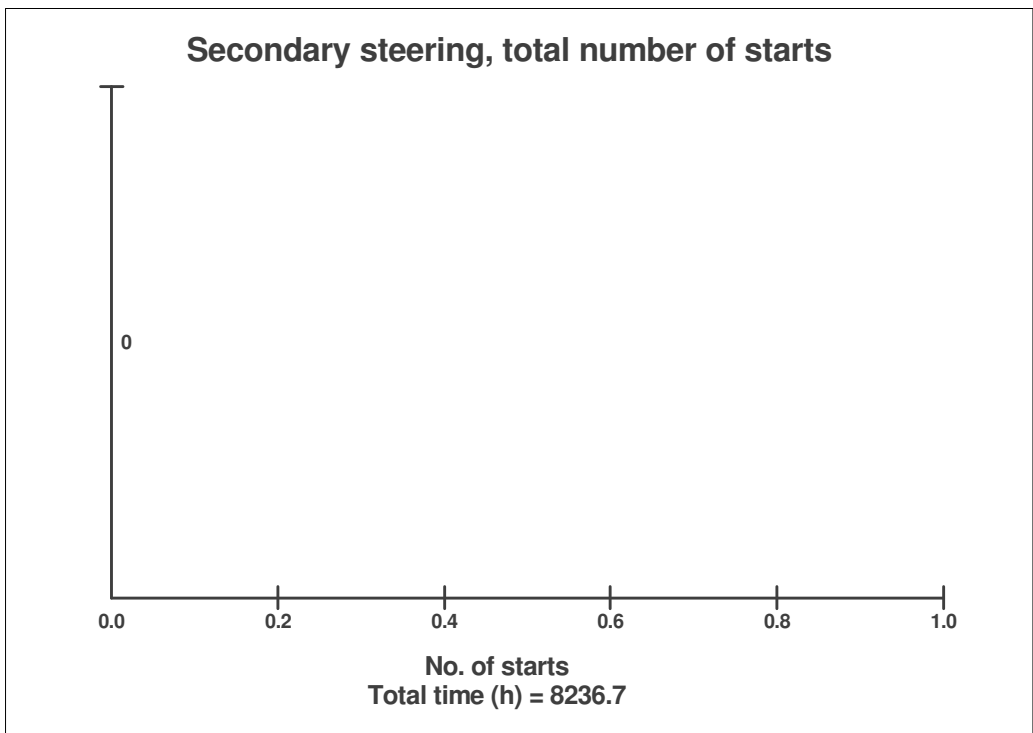
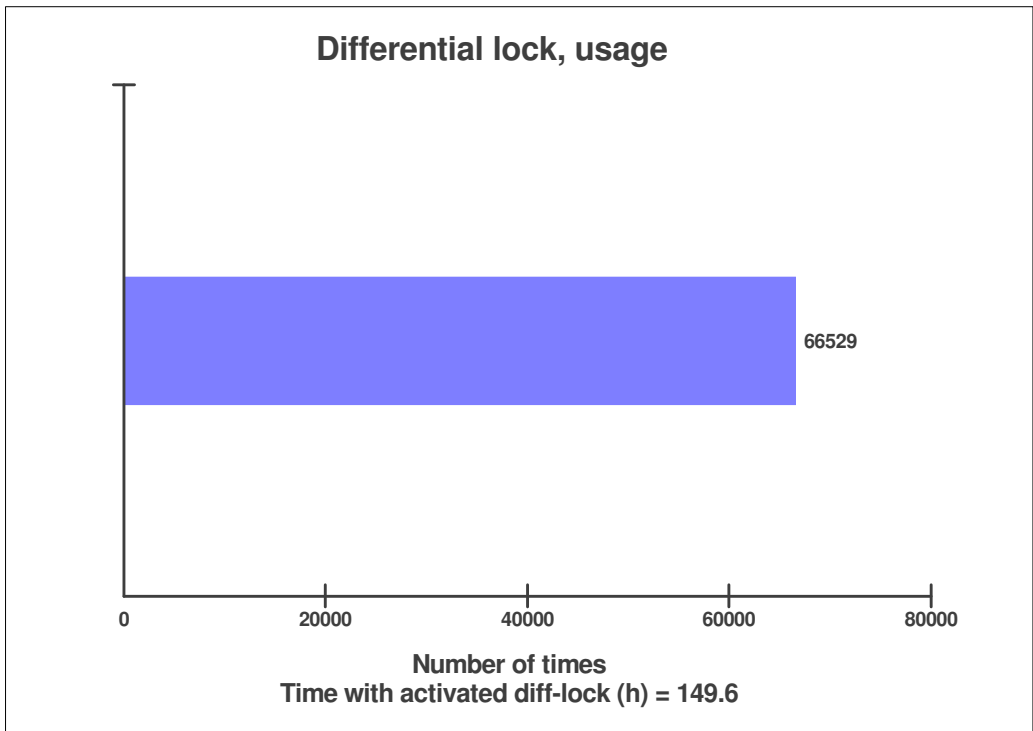
**Sales model:** L150E      **Serial no:** 10420      **Operating hours:** 8238.0  
**Customer name**      used oi      **Reading date:** 30/06/2010  
**Workorder:** 3232



**Sales model:** L150E      **Serial no:** 10420      **Operating hours:** 8238.0  
**Customer name:** used oi      **Reading date:** 30/06/2010  
**Workorder:** 3232



**Sales model:** L150E      **Serial no:** 10420      **Operating hours:** 8238.0  
**Customer name**      used oi      **Reading date:** 30/06/2010  
**Workorder:** 3232



**Sales model:** L150E      **Serial no:** 10420      **Operating hours:** 8238.0  
**Customer name**      used oi      **Reading date:** 30/06/2010  
**Workorder:** 3232

**High hydraulic oil temperature**

**High hydraulic oil temperature**

**Total number of events: 0**

	<b>Op hours</b>	<b>Year</b>	<b>Month</b>	<b>Day</b>	<b>Hour</b>	<b>Minute</b>
<b>J</b>	0	2000	0	0	0	0
<b>I</b>	0	2000	0	0	0	0
<b>H</b>	0	2000	0	0	0	0
<b>G</b>	0	2000	0	0	0	0
<b>F</b>	0	2000	0	0	0	0
<b>E</b>	0	2000	0	0	0	0
<b>D</b>	0	2000	0	0	0	0
<b>C</b>	0	2000	0	0	0	0
<b>A</b>	0	2000	0	0	0	0
<b>B</b>	0	2000	0	0	0	0

**Low Hydraulic Oil Level**



**Sales model:** L150E      **Serial no:** 10420      **Operating hours:** 8238.0  
**Customer name**      used oi      **Reading date:** 30/06/2010  
**Workorder:** 3232

